

Product datasheet for **TA383987S**

CDT1 Rabbit Polyclonal Antibody

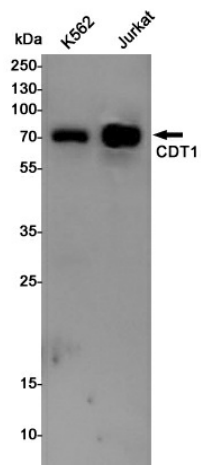
Product data:

Product Type:	Primary Antibodies
Applications:	FC, IF, IP, WB
Recommended Dilution:	WB: 1/1000 ICC/IF: 1/20 FC: 1/20 IP: 1/20
Reactivity:	Human
Host:	Rabbit
Isotype:	IgG
Clonality:	Polyclonal
Immunogen:	Recombinant protein of human CDT1
Formulation:	50mM Tris-Glycine(pH 7.4), 0.15M NaCl, 40% Glycerol, 0.01% Sodium azide and 0.05% BSA
Concentration:	lot specific
Purification:	Affinity Purified
Conjugation:	Unconjugated
Storage:	Store at 4°C short term. Aliquot and store at -20°C long term. Avoid freeze/thaw cycles.
Stability:	1 year
Predicted Protein Size:	Calculated MW: 60 kDa; Observed MW: 65 kDa
Gene Name:	chromatin licensing and DNA replication factor 1
Database Link:	Entrez Gene 81620 Human Q9H211
Background:	Swiss-Prot Acc.Q9H211.
Synonyms:	DUP; RIS2

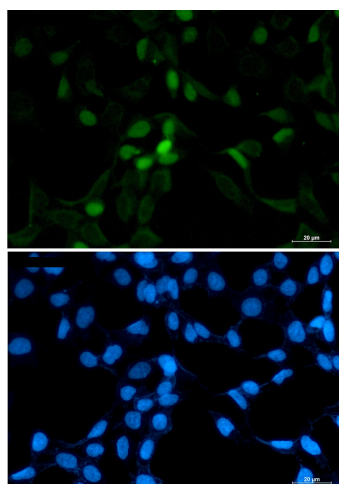


[View online »](#)

Product images:



Western blot analysis of CDT1 in K562, Jurkat lysates using CDT1 antibody.



Immunocytochemistry analysis of CDT1 (green) in 293T using CDT1 antibody, and DAPI (blue).