

## Product datasheet for **TA383982S**

### p16INK4A (CDKN2A) Rabbit Polyclonal Antibody

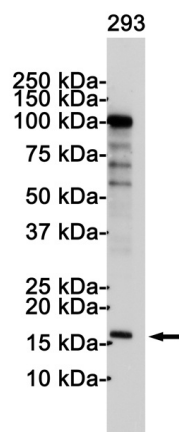
#### Product data:

Product Type:	Primary Antibodies
Applications:	FC, IF, IP, WB
Recommended Dilution:	WB: 1/1000 ICC/IF: 1/50 FC: 1/50 IP: 1/20
Reactivity:	Human
Host:	Rabbit
Isotype:	IgG
Clonality:	Polyclonal
Immunogen:	A synthetic peptide of human CDKN2A/p16INK4a
Formulation:	50mM Tris-Glycine(pH 7.4), 0.15M NaCl, 40% Glycerol, 0.01% Sodium azide and 0.05% BSA
Concentration:	lot specific
Purification:	Affinity Purified
Conjugation:	Unconjugated
Storage:	Store at 4°C short term. Aliquot and store at -20°C long term. Avoid freeze/thaw cycles.
Stability:	1 year
Predicted Protein Size:	Calculated MW: 17 kDa; Observed MW: 17 kDa
Gene Name:	cyclin-dependent kinase inhibitor 2A
Database Link:	<a href="#">Entrez Gene 1029 Human P42771</a>
Background:	Swiss-Prot Acc.P42771.
Synonyms:	ARF; CDK4I; CDKN2; CMM2; INK4; INK4a; MLM; MTS-1; MTS1; OTTHUMP00000021148; p14; p14ARF; p16; p16-INK4; p16-INK4a; p16INK4; p16INK4a; p19; p19Arf; TP16

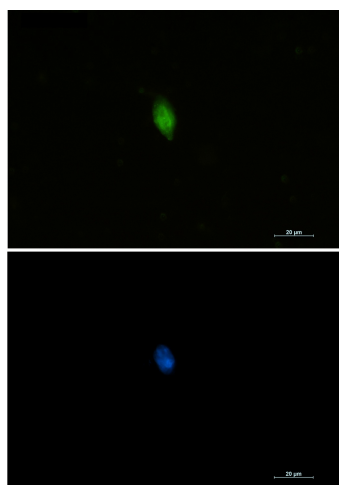


[View online »](#)

## Product images:



Western blot analysis of p16 INK4A in 293 lysates using p16 INK4A antibody.



Immunocytochemistry analysis of CDKN2A (green) in 293 using CDKN2A antibody, and DAPI (blue).