

Product datasheet for **TA383979S**

p27 KIP 1 (CDKN1B) Rabbit Monoclonal Antibody [Clone ID: R09-6C3]

Product data:

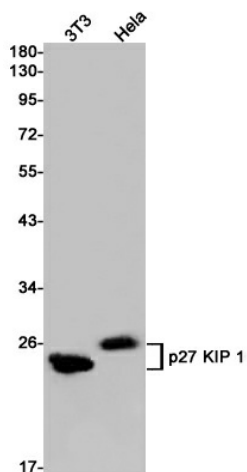
Product Type:	Primary Antibodies
Clone Name:	R09-6C3
Applications:	IHC, IP, WB
Recommended Dilution:	WB: 1/1000 IHC: 1/20 IP: 1/20
Reactivity:	Human, Mouse, Rat
Host:	Rabbit
Isotype:	IgG
Clonality:	Monoclonal
Immunogen:	A synthetic peptide of human p27 KIP 1
Formulation:	50mM Tris-Glycine(pH 7.4), 0.15M NaCl, 40% Glycerol, 0.01% Sodium azide and 0.05% BSA
Concentration:	lot specific
Purification:	Affinity Purified
Conjugation:	Unconjugated
Storage:	Store at 4°C short term. Aliquot and store at -20°C long term. Avoid freeze/thaw cycles.
Stability:	1 year
Predicted Protein Size:	Calculated MW: 22 kDa; Observed MW: 27 kDa
Gene Name:	cyclin-dependent kinase inhibitor 1B
Database Link:	Entrez Gene 1027 Human P46527
Background:	Swiss-Prot Acc.P46527.Important regulator of cell cycle progression. Inhibits the kinase activity of CDK2 bound to cyclin A, but has little inhibitory activity on CDK2 bound to SPDYA (PubMed:28666995). Involved in G1 arrest. Potent inhibitor of cyclin E- and cyclin A-CDK2 complexes. Forms a complex with cyclin type D-CDK4 complexes and is involved in the assembly, stability, and modulation of CCND1-CDK4 complex activation. Acts either as an inhibitor or an activator of cyclin type D-CDK4 complexes depending on its phosphorylation state and/or stoichiometry.



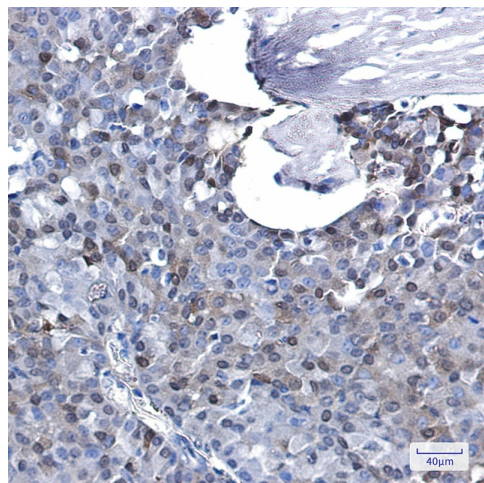
[View online »](#)

Synonyms: CDKN4; KIP1; MEN1B; MEN4; P27KIP1

Product images:



Western blot analysis of p27 KIP 1 in 3T3, HeLa lysates using p27 Kip 1 antibody.



Immunohistochemistry analysis of paraffin-embedded Human breast cancer using p27 KIP 1 antibody. High-pressure and temperature Sodium Citrate pH 6.0 was used for antigen retrieval.