

## Product datasheet for **TA383978**

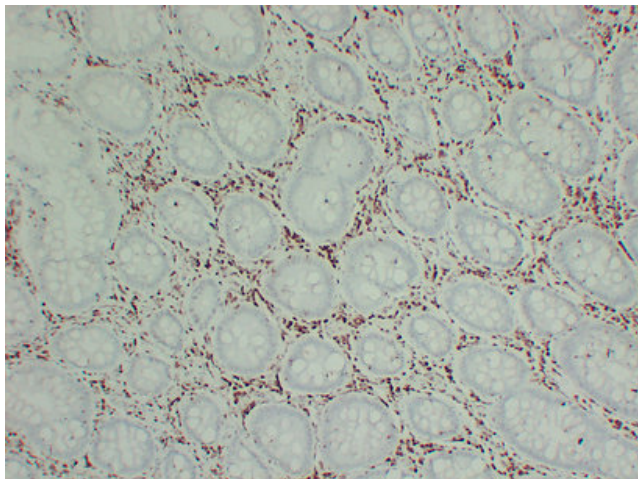
### **p27 KIP 1 (CDKN1B) Mouse Monoclonal Antibody [Clone ID: 5H1-8C7-4C7]**

#### **Product data:**

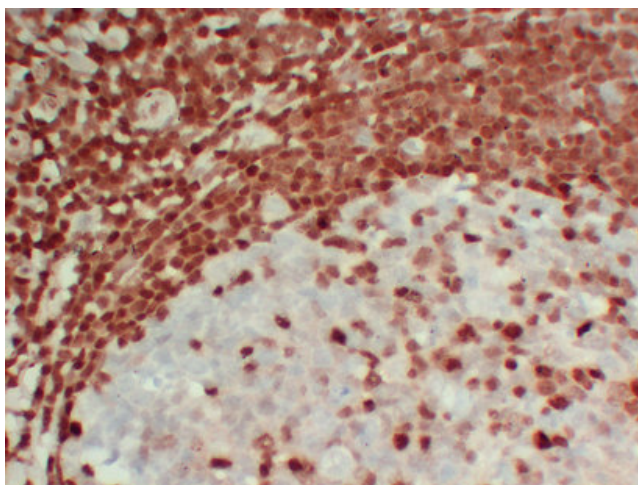
Product Type:	Primary Antibodies
Clone Name:	5H1-8C7-4C7
Applications:	IHC
Recommended Dilution:	IHC-p: 1/100-1/500
Reactivity:	Human
Host:	Mouse
Isotype:	IgG1, kappa
Clonality:	Monoclonal
Immunogen:	Synthesized peptide derived from human p27Kip1
Formulation:	Liquid in PBS containing 50% glycerol, 0.5% BSA and 0.02% sodium azide, pH 7.3.
Concentration:	lot specific
Purification:	Affinity Chromatography
Conjugation:	Unconjugated
Storage:	Store at 4°C short term. Aliquot and store at -20°C long term. Avoid freeze/thaw cycles.
Stability:	1 year
Gene Name:	cyclin-dependent kinase inhibitor 1B
Database Link:	<a href="#">Entrez Gene 1027 Human P46527</a>
Background:	Swiss-Prot Acc.P46527.
Synonyms:	CDKN4; KIP1; MEN1B; MEN4; P27KIP1



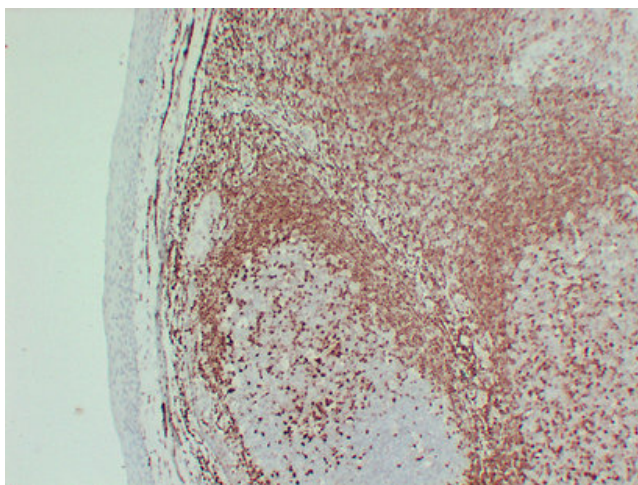
[View online »](#)

**Product images:**

Immunohistochemical analysis of paraffin-embedded Colon carcinoma. 1, Antibody was diluted at 1:200(4°,overnight). 2, TRIS-EDTA of pH8.0 was used for antigen retrieval. 3,Secondary antibody was diluted at 1:200(room temperature, 30min).



Immunohistochemical analysis of paraffin-embedded Tonsil-high magnification. 1, Antibody was diluted at 1:200(4°,overnight). 2, TRIS-EDTA of pH8.0 was used for antigen retrieval. 3,Secondary antibody was diluted at 1:200(room temperature, 30min).



Immunohistochemical analysis of paraffin-embedded Tonsil. 1, Antibody was diluted at 1:200(4°, overnight). 2, TRIS-EDTA of pH8. was used for antigen retrieval. 3, Secondary antibody was diluted at 1:200(room temperature, 30min).