

## Product datasheet for **TA383977M**

### **p21 (CDKN1A) Rabbit Monoclonal Antibody [Clone ID: R07-3K5]**

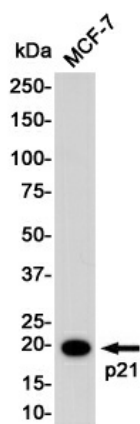
#### **Product data:**

Product Type:	Primary Antibodies
Clone Name:	R07-3K5
Applications:	WB
Recommended Dilution:	WB: 1/1000
Reactivity:	Human, Mouse
Host:	Rabbit
Isotype:	IgG
Clonality:	Monoclonal
Immunogen:	A synthetic peptide of human p21
Formulation:	50mM Tris-Glycine(pH 7.4), 0.15M NaCl, 40% Glycerol, 0.01% Sodium azide and 0.05% BSA
Concentration:	lot specific
Purification:	Affinity Purified
Conjugation:	Unconjugated
Storage:	Store at 4°C short term. Aliquot and store at -20°C long term. Avoid freeze/thaw cycles.
Stability:	1 year
Predicted Protein Size:	Calculated MW: 18 kDa; Observed MW: 21 kDa
Gene Name:	cyclin-dependent kinase inhibitor 1A
Database Link:	<a href="#">Entrez Gene 1026 Human P38936</a>
Background:	Swiss-Prot Acc.P38936.May be involved in p53/TP53 mediated inhibition of cellular proliferation in response to DNA damage. Binds to and inhibits cyclin-dependent kinase activity, preventing phosphorylation of critical cyclin-dependent kinase substrates and blocking cell cycle progression. Functions in the nuclear localization and assembly of cyclin D-CDK4 complex and promotes its kinase activity towards RB1. At higher stoichiometric ratios, inhibits the kinase activity of the cyclin D-CDK4 complex. Inhibits DNA synthesis by DNA polymerase delta by competing with POLD3 for PCNA binding (PubMed:11595739).


[View online »](#)

**Synonyms:** CAP20; CDKN1; CIP1; MDA-6; MDA6; OTTHUMP00000016298; P21; p21CIP1; p21Cip1/Waf1; PIC1; SDI1; WAF1

**Product images:**



Western blot analysis of p21 in MCF-7 lysates using p21 antibody.