

Product datasheet for **TA383975S**

p21 (CDKN1A) Rabbit Polyclonal Antibody

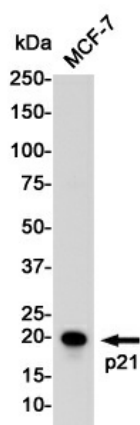
Product data:

Product Type:	Primary Antibodies
Applications:	FC, IHC, IP, WB
Recommended Dilution:	WB: 1/1000 IHC: 1/50 FC: 1/50 IP: 1/10
Reactivity:	Human
Host:	Rabbit
Isotype:	IgG
Clonality:	Polyclonal
Immunogen:	A synthetic peptide of human p21
Formulation:	50mM Tris-Glycine(pH 7.4), 0.15M NaCl, 40% Glycerol, 0.01% Sodium azide and 0.05% BSA
Concentration:	lot specific
Purification:	Affinity Purified
Conjugation:	Unconjugated
Storage:	Store at 4°C short term. Aliquot and store at -20°C long term. Avoid freeze/thaw cycles.
Stability:	1 year
Predicted Protein Size:	Calculated MW: 18 kDa; Observed MW: 21 kDa
Gene Name:	cyclin-dependent kinase inhibitor 1A
Database Link:	Entrez Gene 1026 Human P38936
Background:	Swiss-Prot Acc.P38936.
Synonyms:	CAP20; CDKN1; CIP1; MDA-6; MDA6; OTTHUMP00000016298; P21; p21CIP1; p21Cip1/Waf1; PIC1; SDI1; WAF1

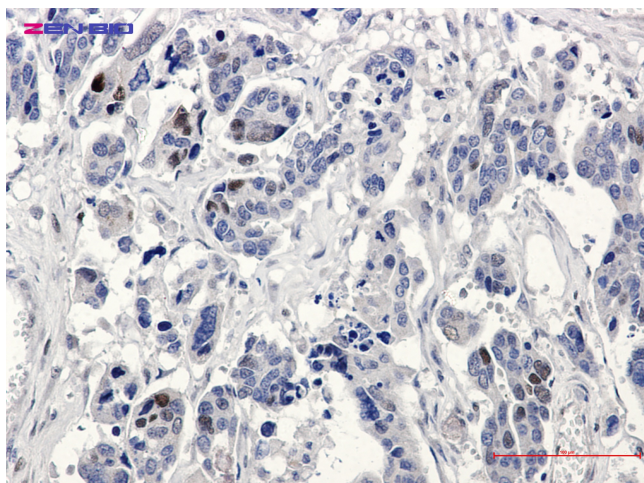


[View online »](#)

Product images:



Western blot detection of p21 Waf1/Cip1 in MCF-7 cell lysates using p21 Waf1/Cip1 Rabbit pAb(1:1000 diluted). Predicted band size: 18KDa. Observed band size: 21KDa.



Immunohistochemistry of p21 in paraffin-embedded Human Cholangiocarcinoma using p21 Rabbit pAb at dilution 1/20