

## Product datasheet for **TA383974**

### **p21 (CDKN1A) Rabbit Polyclonal Antibody**

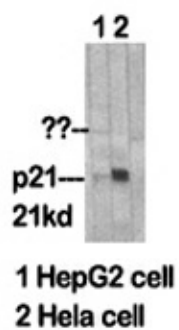
#### **Product data:**

<b>Product Type:</b>	Primary Antibodies
<b>Applications:</b>	ELISA, IF, IHC, WB
<b>Recommended Dilution:</b>	IF: 1/50-200 WB: 1/500-1/2000 ELISA: 1/20000
<b>Reactivity:</b>	Human, Mouse, Rat
<b>Host:</b>	Rabbit
<b>Isotype:</b>	IgG
<b>Clonality:</b>	Polyclonal
<b>Immunogen:</b>	The antiserum was produced against synthesized peptide derived from human p21 Cip1. AA range:111-160
<b>Formulation:</b>	Liquid in PBS containing 50% glycerol, 0.5% BSA and 0.02% sodium azide, pH 7.3.
<b>Concentration:</b>	lot specific
<b>Purification:</b>	Affinity Purified
<b>Conjugation:</b>	Unconjugated
<b>Storage:</b>	Store at 4°C short term. Aliquot and store at -20°C long term. Avoid freeze/thaw cycles.
<b>Stability:</b>	1 year
<b>Predicted Protein Size:</b>	Observed MW (kDa):26
<b>Gene Name:</b>	cyclin-dependent kinase inhibitor 1A
<b>Database Link:</b>	<a href="#">Entrez Gene 1026 Human P38936</a>
<b>Background:</b>	Swiss-Prot Acc.P38936.
<b>Synonyms:</b>	CAP20; CDKN1; CIP1; MDA-6; MDA6; OTTHUMP00000016298; P21; p21CIP1; p21Cip1/Waf1; PIC1; SDI1; WAF1

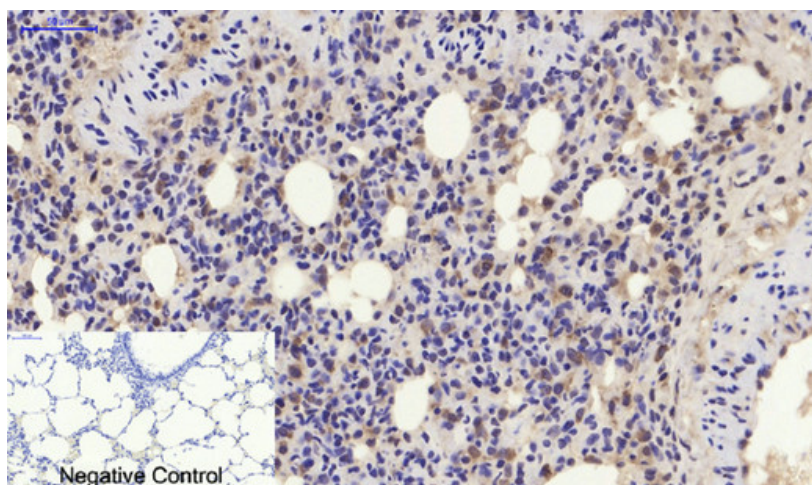


[View online »](#)

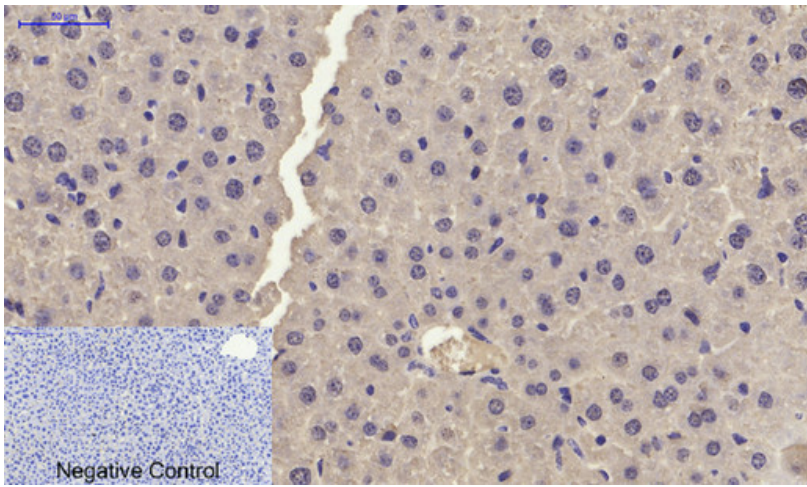
Product images:



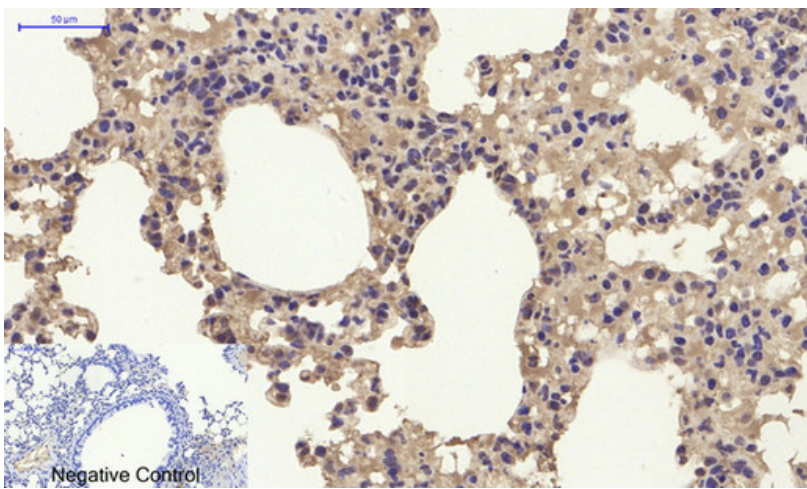
Western blot analysis of p21 in various lysates using p21 antibody



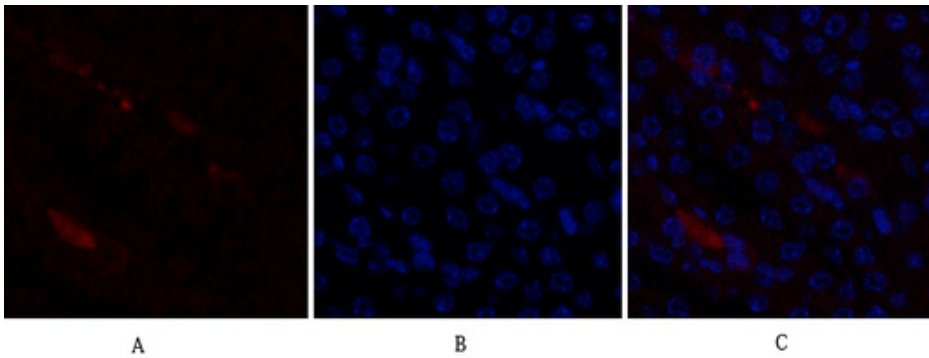
Immunohistochemistry analysis of paraffin-embedded rat lung tissue using p21 antibody. High-pressure and temperature Sodium Citrate pH 6.0 was used for antigen retrieval. Negative control was used by secondary antibody only.



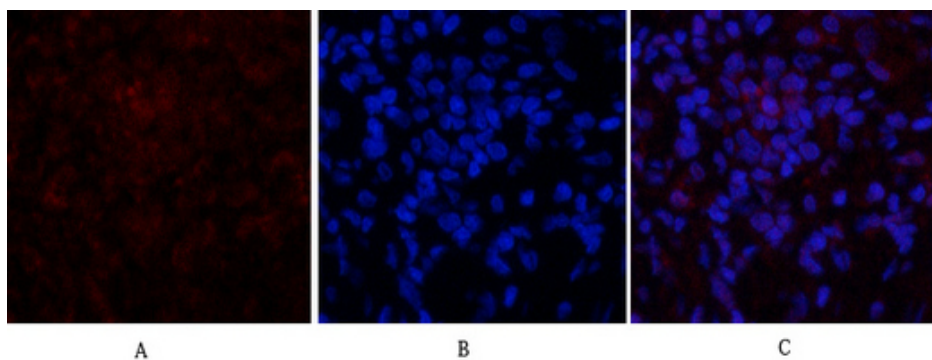
Immunohistochemistry analysis of paraffin-embedded mouse liver tissue using p21 antibody. High-pressure and temperature Sodium Citrate pH 6.0 was used for antigen retrieval. Negative control was used by secondary antibody only.



Immunohistochemistry analysis of paraffin-embedded mouse lung tissue using p21 antibody. High-pressure and temperature Sodium Citrate pH 6.0 was used for antigen retrieval. Negative control was used by secondary antibody only.



Immunofluorescence analysis of p21 in mouse kidney tissue using p21 antibody (red), and DAPI (blue).



Immunofluorescence analysis of p21 in rat lung tissue using p21 antibody(red),and DAPI (blue).