

Product datasheet for **TA383971**

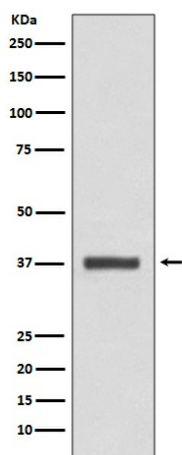
CDK6 Rabbit Polyclonal Antibody

Product data:

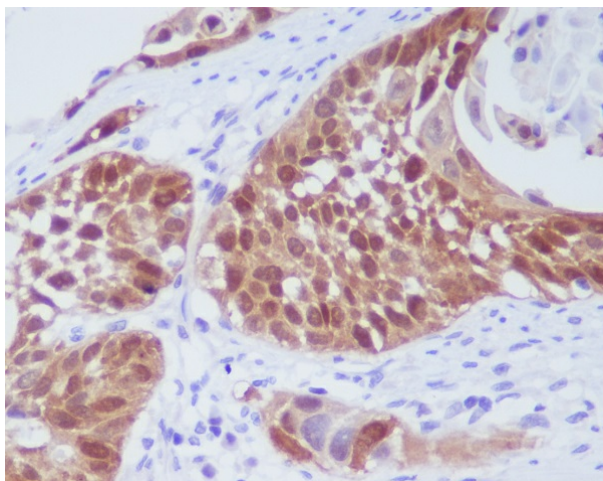
Product Type:	Primary Antibodies
Applications:	FC, IF, IHC, WB
Recommended Dilution:	WB: 1/1000 IHC: 1/50-1/200 ICC/IF: 1/50-1/200 FC: 1/100
Reactivity:	Human
Host:	Rabbit
Isotype:	IgG
Clonality:	Polyclonal
Immunogen:	A synthesized peptide derived from human CDK6
Formulation:	Rabbit IgG in phosphate buffered saline , pH 7.4, 150mM NaCl, 0.02% sodium azide and 50% glycerol.
Concentration:	lot specific
Purification:	Affinity Chromatography
Conjugation:	Unconjugated
Storage:	Store at 4°C short term. Aliquot and store at -20°C long term. Avoid freeze/thaw cycles.
Stability:	1 year
Predicted Protein Size:	37kDa
Gene Name:	cyclin-dependent kinase 6
Database Link:	Entrez Gene 1021 Human Q00534
Background:	Swiss-Prot Acc.Q00534.The cyclin-dependent kinases form complexes with their cyclin partners and with CDK inhibitors. CDK6 and CDK4 associate with the D-type cyclins and target the retinoblastoma protein, allowing passage through the G1/S phase restriction point.
Synonyms:	MGC59692; PLSTIRE



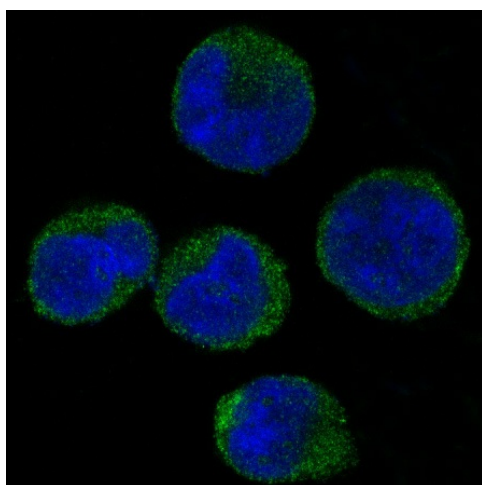
[View online »](#)

Product images:

Western blot analysis of CDK6 in HeLa lysates using CDK6 antibody.



Immunohistochemistry analysis of paraffin-embedded Human lung cancer using CDK6 antibody. High-pressure and temperature Sodium Citrate pH 6.0 was used for antigen retrieval.



Immunofluorescence analysis of CDK6 in K562 using CDK6 antibody.