

## Product datasheet for **TA383968S**

### CDK4 Rabbit Monoclonal Antibody [Clone ID: R04-4I5]

#### Product data:

Product Type:	Primary Antibodies
Clone Name:	R04-4I5
Applications:	IF, IHC, IP, WB
Recommended Dilution:	WB: 1/1000 IHC: 1/50 ICC/IF: 1/50 IP: 1/20
Reactivity:	Human, Mouse, Rat
Host:	Rabbit
Isotype:	IgG
Clonality:	Monoclonal
Immunogen:	Recombinant protein of human Cdk4
Formulation:	50mM Tris-Glycine(pH 7.4), 0.15M NaCl, 40% Glycerol, 0.01% Sodium azide and 0.05% BSA
Concentration:	lot specific
Purification:	Affinity Purified
Conjugation:	Unconjugated
Storage:	Store at 4°C short term. Aliquot and store at -20°C long term. Avoid freeze/thaw cycles.
Stability:	1 year
Predicted Protein Size:	Calculated MW: 34 kDa; Observed MW: 34 kDa
Gene Name:	cyclin-dependent kinase 4
Database Link:	<a href="#">Entrez Gene 1019 Human P11802</a>



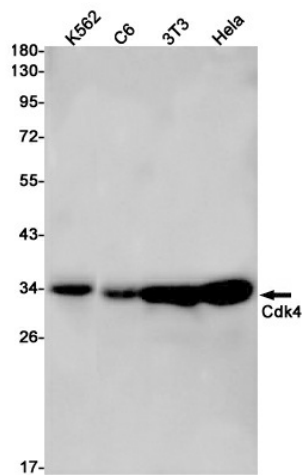
[View online »](#)

**Background:**

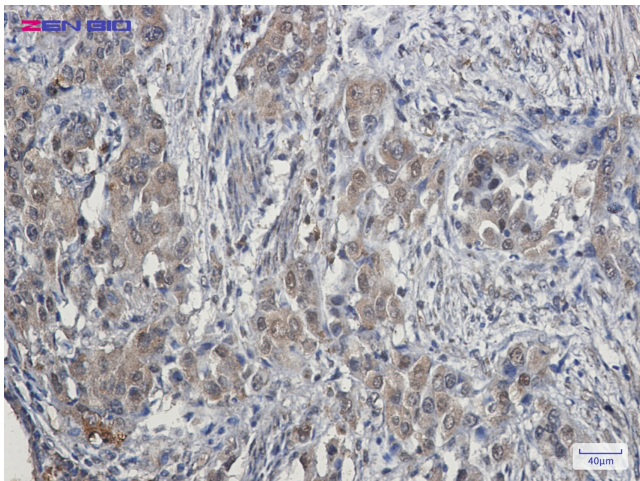
Swiss-Prot Acc.P11802.Ser/Thr-kinase component of cyclin D-CDK4 (DC) complexes that phosphorylate and inhibit members of the retinoblastoma (RB) protein family including RB1 and regulate the cell-cycle during G1/S transition. Phosphorylation of RB1 allows dissociation of the transcription factor E2F from the RB/E2F complexes and the subsequent transcription of E2F target genes which are responsible for the progression through the G1 phase. Hypophosphorylates RB1 in early G1 phase. Cyclin D-CDK4 complexes are major integrators of various mitogenic and antimitogenic signals. Also phosphorylates SMAD3 in a cell-cycle-dependent manner and represses its transcriptional activity. Component of the ternary complex, cyclin D/CDK4/CDKN1B, required for nuclear translocation and activity of the cyclin D-CDK4 complex.

**Synonyms:**

CMM3; MGC14458; PSK-J3

**Product images:**

Western blot analysis of Cdk4 in K562, C6, 3T3, HeLa lysates using CDK4 antibody.



Immunohistochemistry of Cdk4 in paraffin-embedded Human lung cancer tissue using Cdk4 Rabbit mAb at dilution 1/50