

Product datasheet for **TA383965**

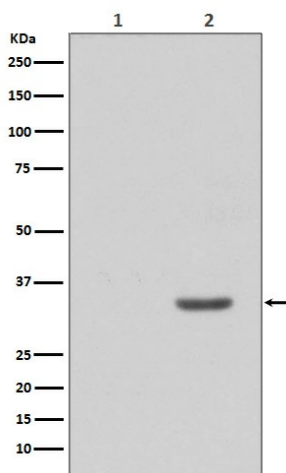
CDK2 Rabbit Polyclonal Antibody

Product data:

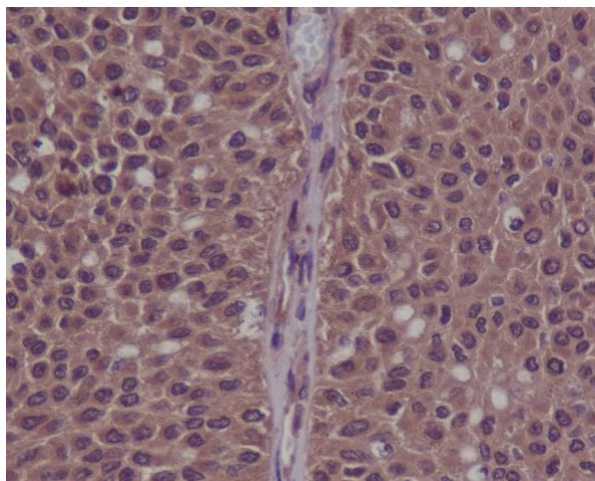
Product Type:	Primary Antibodies
Applications:	IHC, IP, WB
Recommended Dilution:	WB: 1/1000-1/2000 IHC: 1/50-1/200 IP: 1/50
Reactivity:	Human, Mouse, Rat
Host:	Rabbit
Isotype:	IgG
Clonality:	Polyclonal
Immunogen:	A synthesized peptide derived from human CDK2 (Phosphorylated)
Formulation:	Rabbit IgG in phosphate buffered saline , pH 7.4, 150mM NaCl, 0.02% sodium azide and 50% glycerol.
Concentration:	lot specific
Purification:	Affinity Chromatography
Conjugation:	Unconjugated
Storage:	Store at 4°C short term. Aliquot and store at -20°C long term. Avoid freeze/thaw cycles.
Stability:	1 year
Predicted Protein Size:	34kDa
Gene Name:	cyclin-dependent kinase 2
Database Link:	Entrez Gene 1017 Human P24941
Background:	Swiss-Prot Acc.P24941.CDK2 is an important component of the cell cycle machinery. Like p34cdc2, kinase activity is regulated by phosphorylation state as well as association with a cyclin subunit and a CDK inhibitor. This protein can be regulated by the regulatory subunits of the complex including cyclin A or E, CDK inhibitor p21Cip1 (CDKN1A) and p27Kip1 (CDKN1B).
Synonyms:	p33(CDK2)



[View online »](#)

Product images:

Western blot analysis of Phospho-CDK2 (Y15) in (1) HeLa treated with AP; (2) HeLa lysates using Phospho-CDK2 (Tyr15) antibody.



Immunohistochemistry analysis of paraffin-embedded Human bladder cancer using Phospho-CDK2 (Y15) antibody. High-pressure and temperature Sodium Citrate pH 6.0 was used for antigen retrieval.