

Product datasheet for **TA383962**

CDH5 Rabbit Polyclonal Antibody

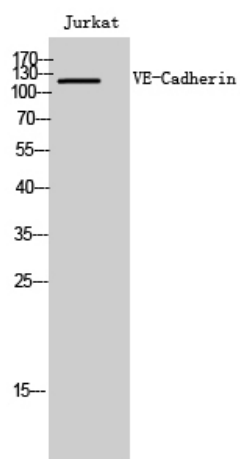
Product data:

Product Type:	Primary Antibodies
Applications:	ELISA, IHC, WB
Recommended Dilution:	WB: 1/500-1/2000 IHC-P: 1/100-1/300
Reactivity:	Human, Mouse
Host:	Rabbit
Isotype:	IgG
Clonality:	Polyclonal
Immunogen:	The antiserum was produced against synthesized peptide derived from human CDH5. AA range:697-746
Formulation:	Liquid in PBS containing 50% glycerol, 0.5% BSA and 0.02% sodium azide, pH 7.3.
Concentration:	lot specific
Purification:	Affinity Purified
Conjugation:	Unconjugated
Storage:	Store at 4°C short term. Aliquot and store at -20°C long term. Avoid freeze/thaw cycles.
Stability:	1 year
Predicted Protein Size:	Observed MW(kDa):120
Database Link:	P33151
Background:	Swiss-Prot Acc.P33151.

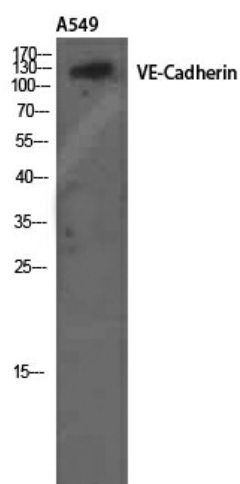


[View online »](#)

Product images:



Western blot analysis of Cadherin 5 in Jurkat lysates using Cadherin 5 antibody.



Western blot analysis of Cadherin 5 in A549 lysates using Cadherin 5 antibody.