

Product datasheet for **TA383960**

LI Cadherin (CDH17) Rabbit Polyclonal Antibody

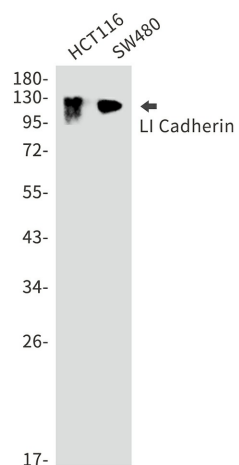
Product data:

Product Type:	Primary Antibodies
Applications:	IHC, IP, WB
Recommended Dilution:	WB: 1/2000 IHC: 1/50 IP: 1/20
Reactivity:	Human
Host:	Rabbit
Isotype:	IgG
Clonality:	Polyclonal
Immunogen:	A synthetic peptide of human LI Cadherin
Formulation:	50mM Tris-Glycine(pH 7.4), 0.15M NaCl, 40% Glycerol, 0.01% Sodium azide and 0.05% BSA
Concentration:	lot specific
Purification:	Affinity Purified
Conjugation:	Unconjugated
Storage:	Store at 4°C short term. Aliquot and store at -20°C long term. Avoid freeze/thaw cycles.
Stability:	1 year
Predicted Protein Size:	Calculated MW: 92 kDa; Observed MW: 120 kDa
Gene Name:	cadherin 17
Database Link:	Entrez Gene 1015 Human Q12864
Background:	Swiss-Prot Acc.Q12864.
Synonyms:	cadherin; cadherin-16; CDH16; FLJ26931; HPT-1; HPT1; LI-cadherin; MGC138218; MGC142024



[View online »](#)

Product images:



Western blot analysis of LI Cadherin in HCT116, SW480 lysates using LI Cadherin antibody.