

Product datasheet for **TA383959**

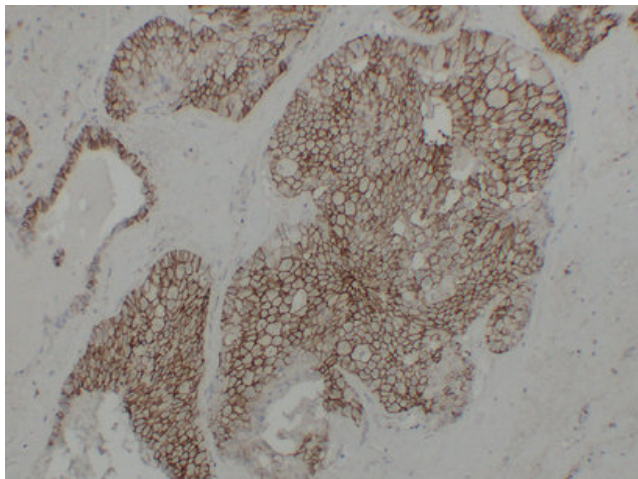
Cadherin 16 (CDH16) Mouse Monoclonal Antibody [Clone ID: 2C2-8E4-10G1]

Product data:

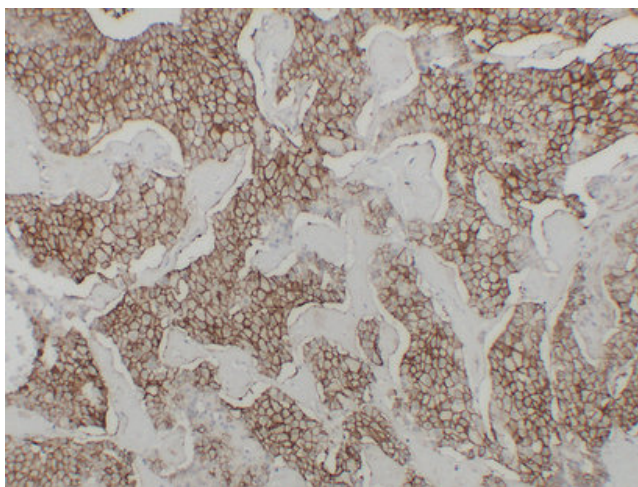
Product Type:	Primary Antibodies
Clone Name:	2C2-8E4-10G1
Applications:	IHC
Recommended Dilution:	IHC-p: 1/100-1/500
Reactivity:	Human
Host:	Mouse
Isotype:	IgG2a, kappa
Clonality:	Monoclonal
Immunogen:	Synthesized peptide derived from human KSP-Cadherin
Formulation:	Liquid in PBS containing 50% glycerol, 0.5% BSA and 0.02% sodium azide, pH 7.3.
Concentration:	lot specific
Purification:	Affinity Chromatography
Conjugation:	Unconjugated
Storage:	Store at 4°C short term. Aliquot and store at -20°C long term. Avoid freeze/thaw cycles.
Stability:	1 year
Gene Name:	cadherin 16
Database Link:	Entrez Gene 1014 Human O75309
Background:	Swiss-Prot Acc.O75309.
Synonyms:	KSP-cadherin



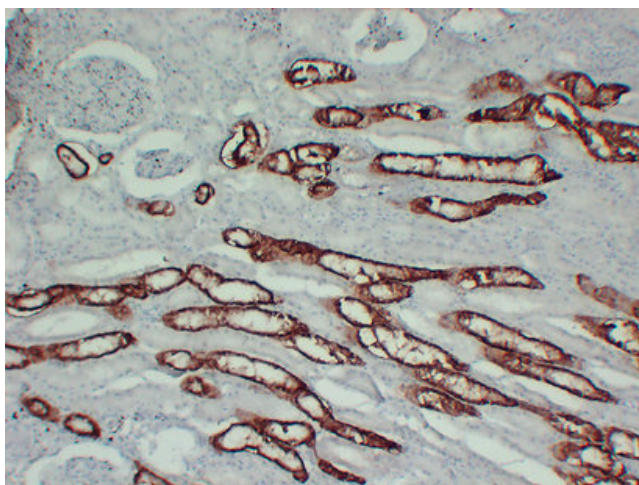
[View online »](#)

Product images:

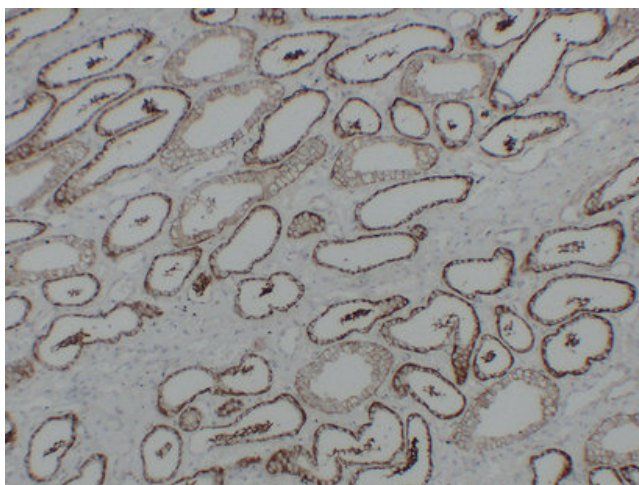
Immunohistochemical analysis of paraffin-embedded Chromophobe cell renal carcinoma. 1, Antibody was diluted at 1:200(4°, overnight). 2, TRIS-EDTA of pH8.0 was used for antigen retrieval. 3, Secondary antibody was diluted at 1:200(room temperature, 30min).



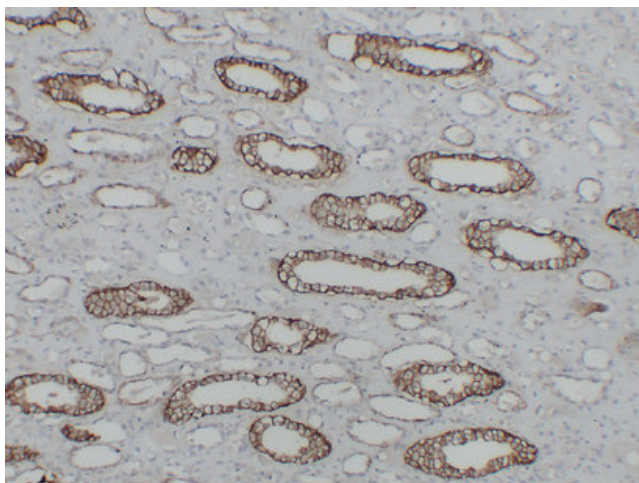
Immunohistochemical analysis of paraffin-embedded Chromophobe cell renal carcinoma. 1, Antibody was diluted at 1:200(4°, overnight). 2, TRIS-EDTA of pH8.0 was used for antigen retrieval. 3, Secondary antibody was diluted at 1:200(room temperature, 30min).



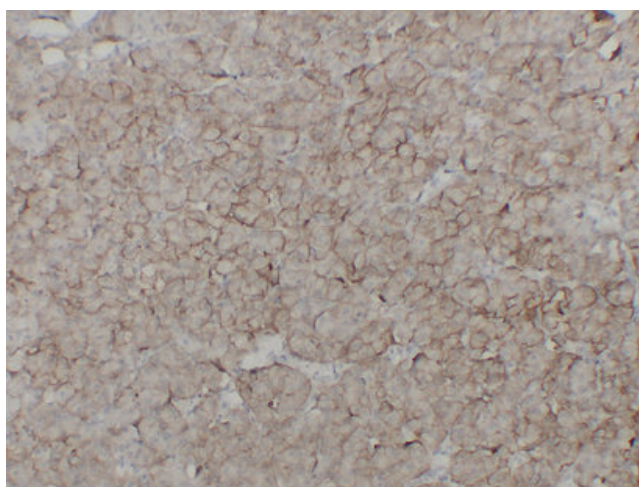
Immunohistochemical analysis of paraffin-embedded Kidney. 1, Antibody was diluted at 1:200(4°,overnight). 2, TRIS-EDTA of pH8. was used for antigen retrieval. 3,Secondary antibody was diluted at 1:200(room temperature, 30min).



Immunohistochemical analysis of paraffin-embedded Renal clear cell carcinoma. 1, Antibody was diluted at 1:200(4°,overnight). 2, TRIS-EDTA of pH8.0 was used for antigen retrieval. 3,Secondary antibody was diluted at 1:200(room temperature, 30min).



Immunohistochemical analysis of paraffin-embedded Renal clear cell carcinoma. 1, Antibody was diluted at 1:200(4°,overnight). 2, TRIS-EDTA of pH8.0 was used for antigen retrieval. 3,Secondary antibody was diluted at 1:200(room temperature, 30min).



Immunohistochemical analysis of paraffin-embedded Renal oncocytoma. 1, Antibody was diluted at 1:200(4°,overnight). 2, TRIS-EDTA of pH8.0 was used for antigen retrieval. 3,Secondary antibody was diluted at 1:200(room temperature, 30min).