

## Product datasheet for TA383958M

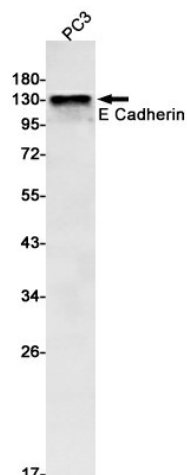
### E Cadherin (CDH1) Rabbit Monoclonal Antibody [Clone ID: R07-4F1]

#### Product data:

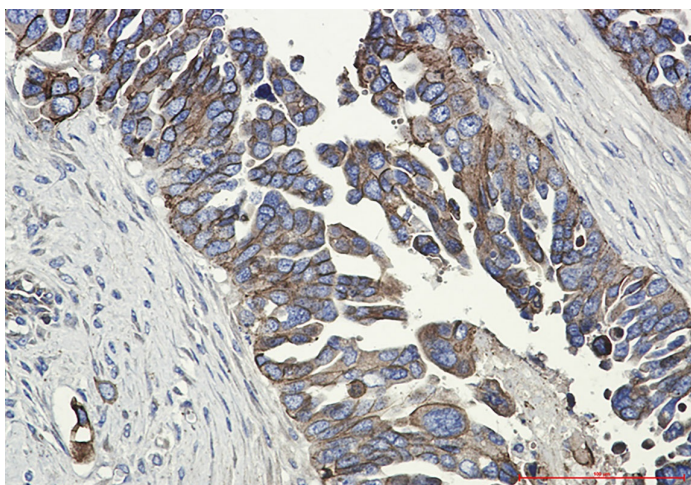
Product Type:	Primary Antibodies
Clone Name:	R07-4F1
Applications:	IF, IHC, IP, WB
Recommended Dilution:	WB: 1/1000 IHC: 1/250 ICC/IF: 1/250 IP: 1/50
Reactivity:	Human
Host:	Rabbit
Isotype:	IgG
Clonality:	Monoclonal
Immunogen:	A synthetic peptide of human E Cadherin
Formulation:	50mM Tris-Glycine(pH 7.4), 0.15M NaCl, 40% Glycerol, 0.01% Sodium azide and 0.05% BSA
Concentration:	lot specific
Purification:	Affinity Purified
Conjugation:	Unconjugated
Storage:	Store at 4°C short term. Aliquot and store at -20°C long term. Avoid freeze/thaw cycles.
Stability:	1 year
Predicted Protein Size:	Calculated MW: 98 kDa; Observed MW: 80-120kDa (cleavages) ,135 kDa
Gene Name:	cadherin 1
Database Link:	<a href="#">Entrez Gene 999 Human P12830</a>
Background:	Swiss-Prot Acc.P12830.
Synonyms:	Arc-1; CD324; CDHE; E-Cadherin; ECAD; LCAM; UVO; uvomorulin


[View online »](#)

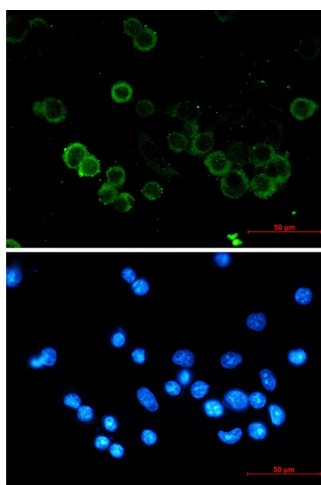
## Product images:



Western blot analysis of E Cadherin in PC-3 lysates using E Cadherin antibody.



Immunohistochemistry analysis of paraffin-embedded Human Cholangiocarcinoma using E Cadherin antibody. High-pressure and temperature Sodium Citrate pH 6.0 was used for antigen retrieval.



Immunocytochemistry analysis of E Cadherin (green) in MCF-7 using E Cadherin antibody, and DAPI(blue)