

Product datasheet for **TA383957S**

E Cadherin (CDH1) Rabbit Polyclonal Antibody

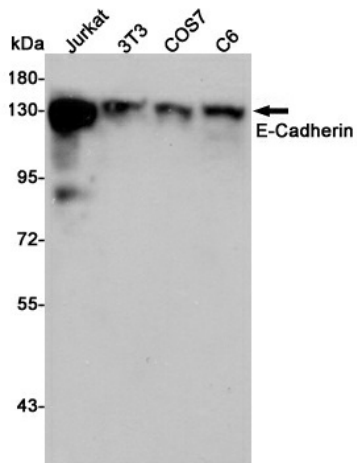
Product data:

Product Type:	Primary Antibodies
Applications:	ELISA, IF, IHC, WB
Recommended Dilution:	WB: 1/500-1/2000 IHC: 1/100-1/300 IF: 1/200-1/1000 ELISA: 1/20000
Reactivity:	Human, Mouse, Rat
Host:	Rabbit
Isotype:	IgG
Clonality:	Polyclonal
Immunogen:	The antiserum was produced against synthesized peptide derived from human Cadherin. AA range:833-882
Formulation:	Liquid in PBS containing 50% glycerol, 0.5% BSA and 0.02% sodium azide, pH 7.3.
Concentration:	lot specific
Purification:	Affinity Purified
Conjugation:	Unconjugated
Storage:	Store at 4°C short term. Aliquot and store at -20°C long term. Avoid freeze/thaw cycles.
Stability:	1 year
Predicted Protein Size:	Observed MW (kDa):125-130
Gene Name:	cadherin 1
Database Link:	Entrez Gene 999 Human P12830
Background:	Swiss-Prot Acc.P12830.
Synonyms:	Arc-1; CD324; CDHE; E-Cadherin; ECAD; LCAM; UVO; uvomorulin

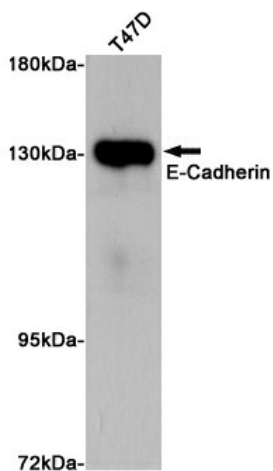


[View online »](#)

Product images:



Western blot analysis of ECadherin in Jurkat, 3T3, COS7 and C6 lysates using ECadherin antibody.



Western blot analysis of extract from T47D cells using E-Cadherin Rabbit pAb at 1:1000 dilution. Predicted band size: 135kDa. Observed band size: 135kDa.