

Product datasheet for **TA383954**

CDC37 Rabbit Polyclonal Antibody

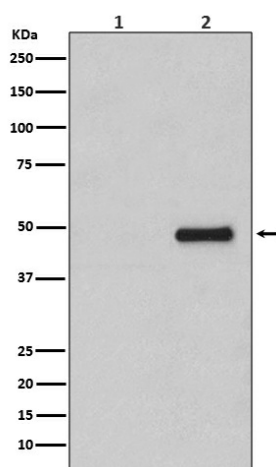
Product data:

Product Type:	Primary Antibodies
Applications:	IP, WB
Recommended Dilution:	WB: 1/500-1/2000 IP: 1/50
Reactivity:	Human, Mouse, Rat
Host:	Rabbit
Isotype:	IgG
Clonality:	Polyclonal
Immunogen:	A synthesized peptide derived from human Phospho-CDC37 (S13) (Phosphorylated)
Formulation:	Rabbit IgG in phosphate buffered saline , pH 7.4, 150mM NaCl, 0.02% sodium azide and 50% glycerol.
Concentration:	lot specific
Purification:	Affinity Chromatography
Conjugation:	Unconjugated
Storage:	Store at 4°C short term. Aliquot and store at -20°C long term. Avoid freeze/thaw cycles.
Stability:	1 year
Predicted Protein Size:	50kDa
Gene Name:	cell division cycle 37
Database Link:	Entrez Gene 11140 Human Q16543
Background:	Swiss-Prot Acc.Q16543.CDC37 is an important component of the HSP90 chaperone complex. It was initially identified for its involvement in cell-cycle progression and was later found to have a much broader role as a chaperone for a wide variety of kinases and other proteins. CDC37 protein has an amino-terminal kinase binding domain followed by a central HSP90 binding domain.
Synonyms:	CDC37A; P50CDC37



[View online »](#)

Product images:



Western blot analysis of Phospho-CDC37 (S13) in (1) Jurkat lysates treated with Alkaline Phosphatase; (2) Jurkat lysates using Phospho-CDC37 (Ser13) antibody.