

## Product datasheet for **TA383953M**

### CDA Rabbit Monoclonal Antibody [Clone ID: R08-4C9]

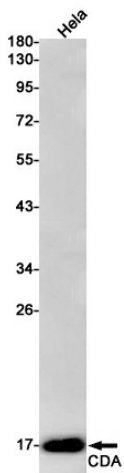
#### Product data:

Product Type:	Primary Antibodies
Clone Name:	R08-4C9
Applications:	IHC, WB
Recommended Dilution:	WB: 1/1000 IHC: 1/50
Reactivity:	Human
Host:	Rabbit
Isotype:	IgG
Clonality:	Monoclonal
Immunogen:	Recombinant protein of human CDA
Formulation:	50mM Tris-Glycine(pH 7.4), 0.15M NaCl, 40% Glycerol, 0.01% Sodium azide and 0.05% BSA
Concentration:	lot specific
Purification:	Affinity Purified
Conjugation:	Unconjugated
Storage:	Store at 4°C short term. Aliquot and store at -20°C long term. Avoid freeze/thaw cycles.
Stability:	1 year
Predicted Protein Size:	Calculated MW: 16 kDa; Observed MW: 16 kDa
Gene Name:	cytidine deaminase
Database Link:	<a href="#">Entrez Gene 978 Human P32320</a>
Background:	Swiss-Prot Acc.P32320.This enzyme scavenges exogenous and endogenous cytidine and 2'-deoxycytidine for UMP synthesis.
Synonyms:	CDD

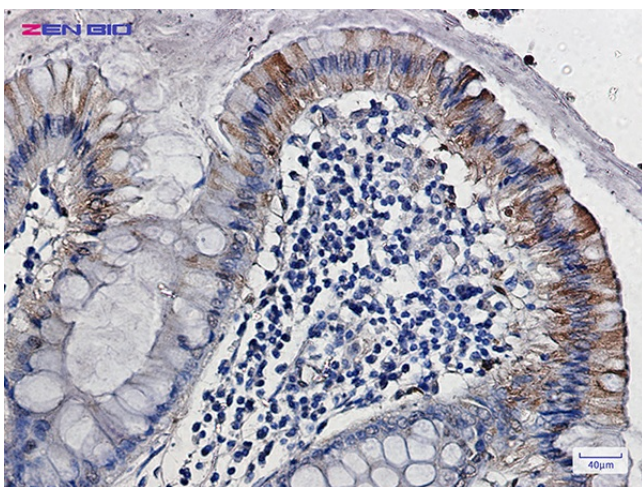


[View online »](#)

## Product images:



Western blot analysis of CDA in HeLa lysates using CDA antibody.



Immunohistochemistry of CDA in paraffin-embedded Human colon cancer tissue using CDA Rabbit mAb at dilution 1/50