

## Product datasheet for **TA383951**

### CD96 Rabbit Polyclonal Antibody

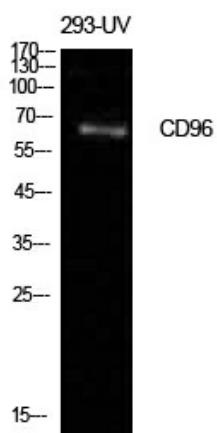
#### Product data:

Product Type:	Primary Antibodies
Applications:	ELISA, WB
Recommended Dilution:	WB: 1/500-1/2000 ELISA: 1/10000
Reactivity:	Human
Host:	Rabbit
Isotype:	IgG
Clonality:	Polyclonal
Immunogen:	The antiserum was produced against synthesized peptide derived from the Internal region of human CD96. AA range:291-340
Formulation:	Liquid in PBS containing 50% glycerol, 0.5% BSA and 0.02% sodium azide, pH 7.3.
Concentration:	lot specific
Purification:	Affinity Purified
Conjugation:	Unconjugated
Storage:	Store at 4°C short term. Aliquot and store at -20°C long term. Avoid freeze/thaw cycles.
Stability:	1 year
Predicted Protein Size:	Observed MW (kDa):65
Database Link:	<a href="#">P40200</a>
Background:	Swiss-Prot Acc.P40200.

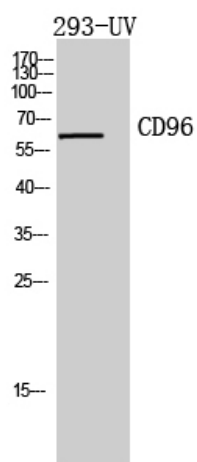


[View online »](#)

## Product images:



Western blot analysis of CD96 in 293UV lysates using CD96 antibody.



Western blot analysis of CD96 in 293UV lysates using CD96 antibody.