

## Product datasheet for **TA383950M**

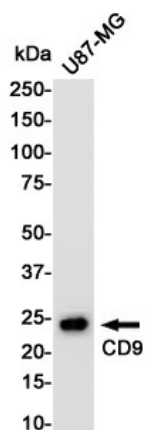
### CD9 Rabbit Polyclonal Antibody

#### Product data:

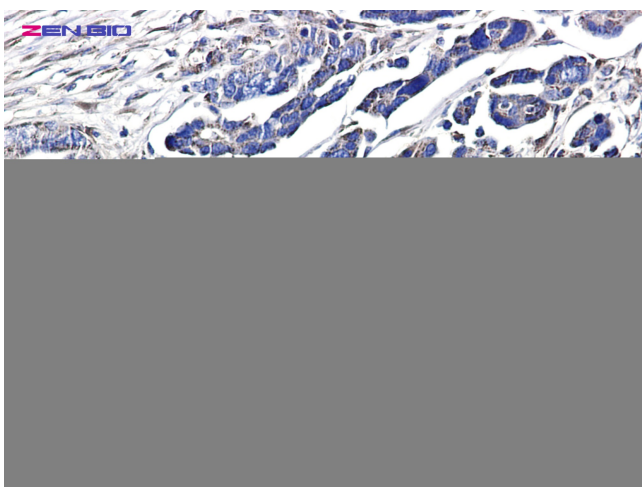
Product Type:	Primary Antibodies
Applications:	FC, IF, IHC, IP, WB
Recommended Dilution:	WB: 1/1000 IHC: 1/50 ICC/IF: 1/50 FC: 1/20 IP: 1/20
Reactivity:	Human
Host:	Rabbit
Isotype:	IgG
Clonality:	Polyclonal
Immunogen:	A synthetic peptide of human CD9
Formulation:	50mM Tris-Glycine(pH 7.4), 0.15M NaCl, 40% Glycerol, 0.01% Sodium azide and 0.05% BSA
Concentration:	lot specific
Purification:	Affinity Purified
Conjugation:	Unconjugated
Storage:	Store at 4°C short term. Aliquot and store at -20°C long term. Avoid freeze/thaw cycles.
Stability:	1 year
Predicted Protein Size:	Calculated MW: 25 kDa; Observed MW: 25 kDa
Gene Name:	CD9 molecule
Database Link:	<a href="#">Entrez Gene 928 Human P21926</a>
Background:	Swiss-Prot Acc.P21926.
Synonyms:	5H9; BA2; BTCC-1; DRAP-27; GIG2; MIC3; MRP-1; OTTHUMP00000041576; P24; Tetraspanin-29; Tspan-29; TSPAN29


[View online »](#)

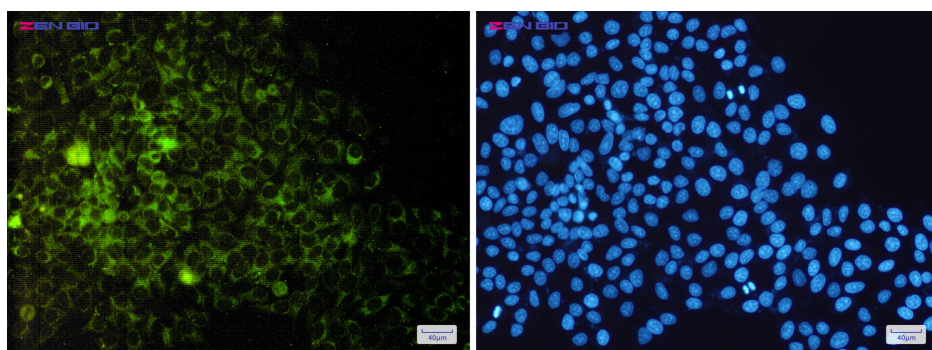
## Product images:



Western blot detection of CD9 in U87-MG cell lysates using CD9 Rabbit pAb(1:1000 diluted). Predicted band size: 25 kDa. Observed band size: 25 kDa.



Immunohistochemistry of CD9 in paraffin-embedded Human Cholangiocarcinoma using CD9 Rabbit pAb at dilution 1/2



Immunocytochemistry of CD9 (green) in HeLa cells using CD9 Rabbit pAb at dilution 1/50, and DAPI (blue)