

## Product datasheet for TA383947M

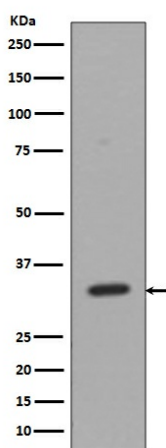
### CD8A Rabbit Polyclonal Antibody

#### Product data:

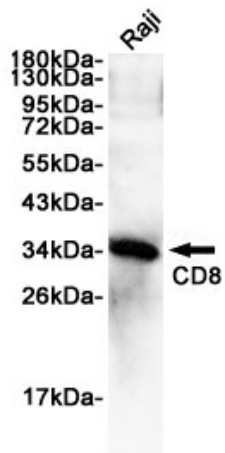
Product Type:	Primary Antibodies
Applications:	IF, IHC, WB
Recommended Dilution:	WB: 1/500-1/2000 IHC: 1/50-1/200 ICC/IF: 1/50-1/200
Reactivity:	Human
Host:	Rabbit
Isotype:	IgG
Clonality:	Polyclonal
Immunogen:	A synthesized peptide derived from human CD8
Formulation:	Rabbit IgG in phosphate buffered saline , pH 7.4, 150mM NaCl, 0.02% sodium azide and 50% glycerol.
Concentration:	lot specific
Purification:	Affinity Chromatography
Conjugation:	Unconjugated
Storage:	Store at 4°C short term. Aliquot and store at -20°C long term. Avoid freeze/thaw cycles.
Stability:	1 year
Predicted Protein Size:	32kDa
Gene Name:	CD8a molecule
Database Link:	<a href="#">Entrez Gene 925 Human P01732</a>
Background:	Swiss-Prot Acc.P01732.Identifies cytotoxic/suppressor T-cells that interact with MHC class I bearing targets. CD8 is thought to play a role in the process of T-cell mediated killing. CD8 alpha chains binds to class I MHC molecules alpha-3 domains.
Synonyms:	CD8; Leu2; MAL; OTTHUMP00000203721; p32


[View online »](#)

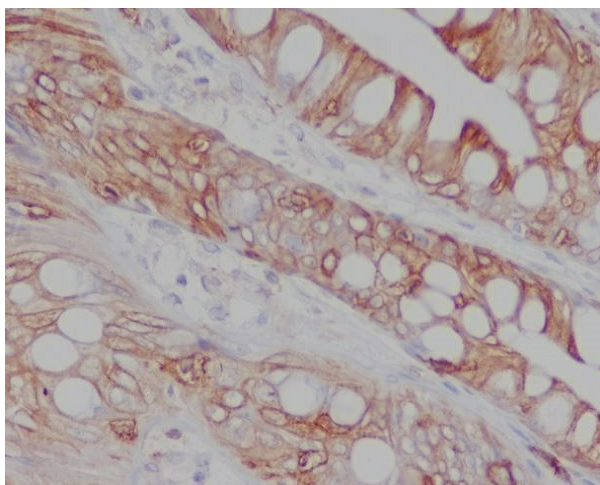
## Product images:



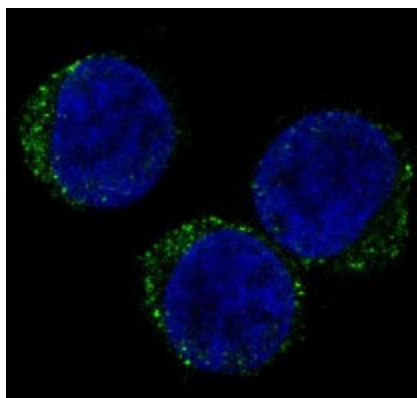
Western blot analysis of CD8 in Jurkat lysates using CD8 alpha antibody.



Western blot analysis of CD8 alpha in Raji lysates using CD8 antibody.



Immunohistochemistry analysis of paraffin-embedded Human colon using CD8 antibody. High-pressure and temperature Sodium Citrate pH 6.0 was used for antigen retrieval.



Immunofluorescence analysis of CD8 alpha in Jurkat using CD8 antibody.