

Product datasheet for **TA383940M**

Cd63 Rabbit Monoclonal Antibody [Clone ID: R06-4G3]

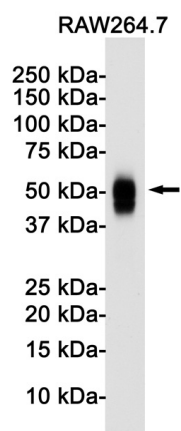
Product data:

Product Type:	Primary Antibodies
Clone Name:	R06-4G3
Applications:	IHC, WB
Recommended Dilution:	WB: 1/1000 IHC: 1/20
Reactivity:	Human, Mouse
Host:	Rabbit
Isotype:	IgG
Clonality:	Monoclonal
Immunogen:	A synthetic peptide of mouse CD63
Formulation:	50mM Tris-Glycine(pH 7.4), 0.15M NaCl, 40% Glycerol, 0.01% Sodium azide and 0.05% BSA
Concentration:	lot specific
Purification:	Affinity Purified
Conjugation:	Unconjugated
Storage:	Store at 4°C short term. Aliquot and store at -20°C long term. Avoid freeze/thaw cycles.
Stability:	1 year
Predicted Protein Size:	Calculated MW: 26 kDa; Observed MW: 40-70 kDa
Gene Name:	CD63 antigen
Database Link:	Entrez Gene 12512 Mouse P41731
Background:	Swiss-Prot Acc.P41731.
Synonyms:	granulophysin; LAMP-3; ME491; MLA1; OMA81H; tetraspanin-30; Tspan-30; TSPAN30

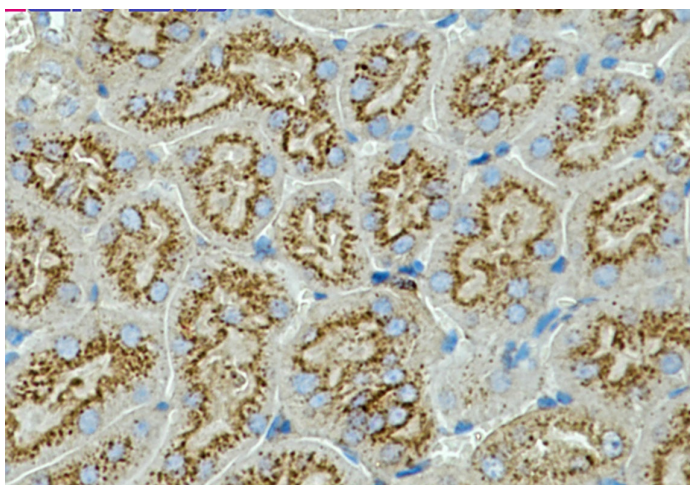


[View online »](#)

Product images:



Western blot analysis of CD63 in Raw264.7 lysates using CD63 antibody.



Immunohistochemistry analysis of paraffin-embedded mouse kidney using CD63 antibody. High-pressure and temperature Sodium Citrate pH 6.0 was used for antigen retrieval.