

## Product datasheet for **TA383939**

### CD63 Rabbit Polyclonal Antibody

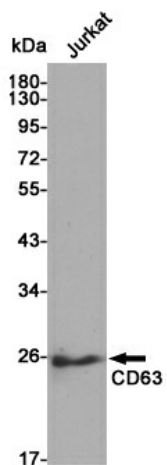
#### Product data:

Product Type:	Primary Antibodies
Applications:	ELISA, IF, IHC, WB
Recommended Dilution:	IF: 1/50-200 WB: 1/500-1/2000 IHC-p: 1/100-1/300 ELISA: 1/20000
Reactivity:	Human
Host:	Rabbit
Isotype:	IgG
Clonality:	Polyclonal
Immunogen:	The antiserum was produced against synthesized peptide derived from the Internal region of human CD63. AA range:121-170
Formulation:	Liquid in PBS containing 50% glycerol, 0.5% BSA and 0.02% sodium azide, pH 7.3.
Concentration:	lot specific
Purification:	Affinity Purified
Conjugation:	Unconjugated
Storage:	Store at 4°C short term. Aliquot and store at -20°C long term. Avoid freeze/thaw cycles.
Stability:	1 year
Predicted Protein Size:	Observed MW (kDa):26
Gene Name:	CD63 molecule
Database Link:	<a href="#">Entrez Gene 967 Human P08962</a>
Background:	Swiss-Prot Acc.P08962.
Synonyms:	granulophysin; LAMP-3; ME491; MLA1; OMA81H; tetraspanin-30; Tspan-30; TSPAN30



[View online »](#)

## Product images:



Western blot analysis of CD63 in Jurkat lysates using CD63 antibody.