

Product datasheet for **TA383936M**

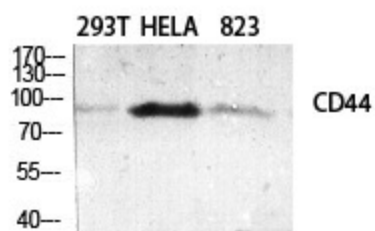
CD44 Rabbit Polyclonal Antibody

Product data:

Product Type:	Primary Antibodies
Applications:	ELISA, IF, IHC, WB
Recommended Dilution:	IF: 1/50-200 WB: 1/500-2000 IHC: 1/50-300
Reactivity:	Human, Mouse, Rat
Host:	Rabbit
Isotype:	IgG
Clonality:	Polyclonal
Immunogen:	The antiserum was produced against synthesized peptide derived from human CD44. AA range:681-730
Formulation:	Liquid in PBS containing 50% glycerol, 0.5% BSA and 0.02% sodium azide, pH 7.3.
Concentration:	lot specific
Purification:	Affinity Purified
Conjugation:	Unconjugated
Storage:	Store at 4°C short term. Aliquot and store at -20°C long term. Avoid freeze/thaw cycles.
Stability:	1 year
Predicted Protein Size:	Observed MW (kDa):90
Gene Name:	CD44 molecule (Indian blood group)
Database Link:	Entrez Gene 960 Human P16070
Background:	Swiss-Prot Acc.P16070.
Synonyms:	CD44R; CDW44; CSPG8; ECMR-III; Epican; HCELL; HUTCH-I; IN; LHR; MC56; MDU2; MDU3; MGC10468; MIC4; MUTCH-I; PGP-1; PGP-I; Pgp1



[View online »](#)

Product images:


Western blot analysis of CD44 in various lysates using CD44 antibody.