

Product datasheet for **TA383935M**

CD3G Rabbit Monoclonal Antibody [Clone ID: R07-1C8]

Product data:

| | |
|-------------------------|--|
| Product Type: | Primary Antibodies |
| Clone Name: | R07-1C8 |
| Applications: | IHC, IP, WB |
| Recommended Dilution: | WB: 1/2000-1/10000 IHC: 1/50-1/200 IP: 1/20-1/50 |
| Reactivity: | Human |
| Host: | Rabbit |
| Isotype: | IgG |
| Clonality: | Monoclonal |
| Immunogen: | A synthetic peptide of human CD3G |
| Formulation: | 50mM Tris-Glycine(pH 7.4), 0.15M NaCl, 40% Glycerol, 0.01% Sodium azide and 0.05% BSA |
| Concentration: | lot specific |
| Purification: | Affinity Purified |
| Conjugation: | Unconjugated |
| Storage: | Store at 4°C short term. Aliquot and store at -20°C long term. Avoid freeze/thaw cycles. |
| Stability: | 1 year |
| Predicted Protein Size: | Calculated MW: 21 kDa; Observed MW: 21 kDa |
| Gene Name: | CD3g molecule |
| Database Link: | Entrez Gene 917 Human P09693 |



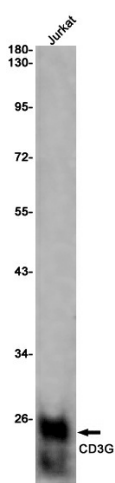
[View online »](#)

Background:

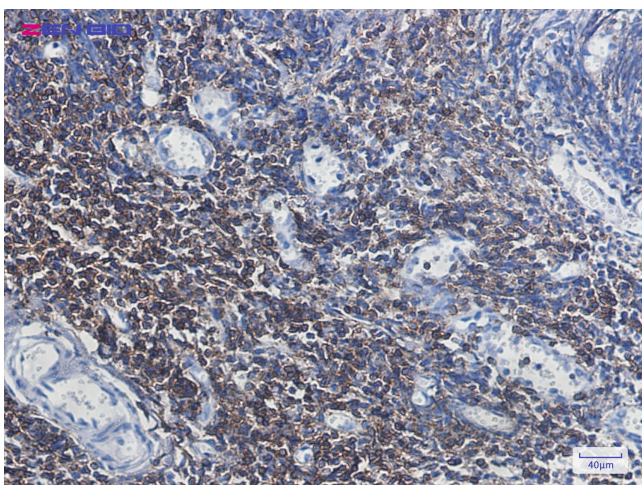
Swiss-Prot Acc.P09693.Part of the TCR-CD3 complex present on T-lymphocyte cell surface that plays an essential role in adaptive immune response. When antigen presenting cells (APCs) activate T-cell receptor (TCR), TCR-mediated signals are transmitted across the cell membrane by the CD3 chains CD3D, CD3E, CD3G and CD3Z. All CD3 chains contain immunoreceptor tyrosine-based activation motifs (ITAMs) in their cytoplasmic domain. Upon TCR engagement, these motifs become phosphorylated by Src family protein tyrosine kinases LCK and FYN, resulting in the activation of downstream signaling pathways (PubMed:2470098). In addition to this role of signal transduction in T-cell activation, CD3G plays an essential role in the dynamic regulation of TCR expression at the cell surface (PubMed:8187769). Indeed, constitutive TCR cycling is dependent on the di-leucine-based (diL) receptor-sorting motif present in CD3G.

Synonyms:

CD3-GAMMA; FLJ17620; FLJ17664; FLJ79544; FLJ94613; MGC138597; T3G

Product images:


Western blot analysis of CD3G in Jurkat lysates using CD3G antibody.



Immunohistochemistry of CD3G in paraffin-embedded Human tonsil using CD3G Rabbit mAb at dilution 1/50