

## Product datasheet for **TA383925**

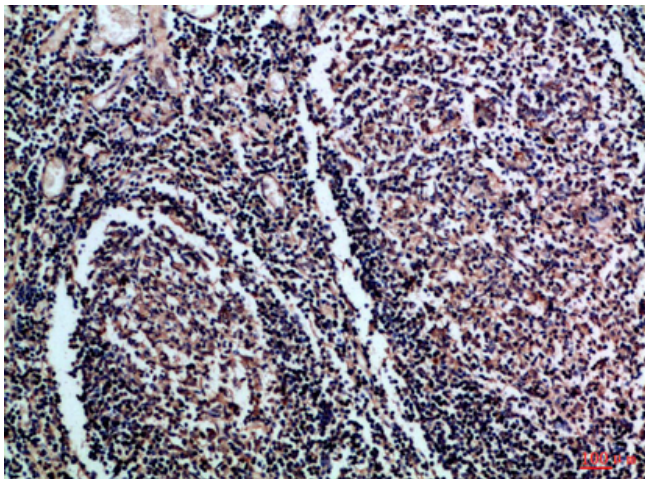
### CD1 (CD1A) Rabbit Polyclonal Antibody

#### Product data:

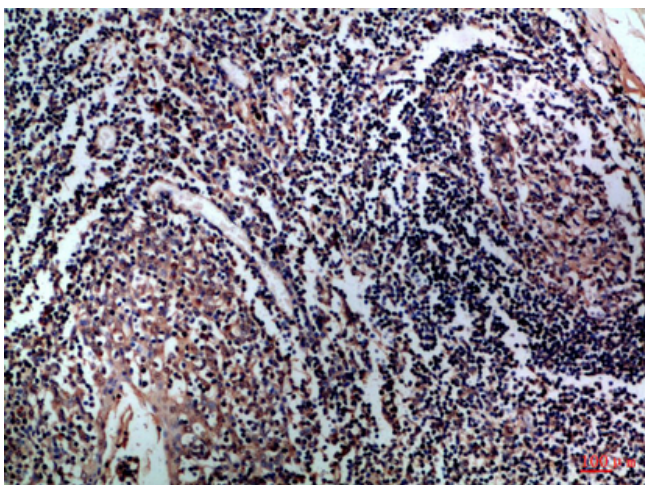
Product Type:	Primary Antibodies
Applications:	ELISA, IHC
Recommended Dilution:	IHC-p: 1/50-1/200
Reactivity:	Human
Host:	Rabbit
Isotype:	IgG
Clonality:	Polyclonal
Immunogen:	Synthetic peptide from human protein at AA range: 220-270
Formulation:	Liquid in PBS containing 50% glycerol, 0.5% BSA and 0.02% sodium azide, pH 7.3.
Concentration:	lot specific
Purification:	Affinity Purified
Conjugation:	Unconjugated
Storage:	Store at 4°C short term. Aliquot and store at -20°C long term. Avoid freeze/thaw cycles.
Stability:	1 year
Gene Name:	CD1a molecule
Database Link:	<a href="#">Entrez Gene 909 Human P06126</a>
Background:	Swiss-Prot Acc.P06126/P29016.
Synonyms:	CD1; FCB6; HTA1; R4; T6



[View online »](#)

**Product images:**

Immunohistochemistry analysis of paraffin-embedded Human tonsil using CD1a/b antibody. High-pressure and temperature Sodium Citrate pH 6.0 was used for antigen retrieval.



Immunohistochemical analysis of paraffin-embedded Human tonsils using CD1a/b antibody. High-pressure and temperature Sodium Citrate pH 6.0 was used for antigen retrieval.