

Product datasheet for **TA383923**

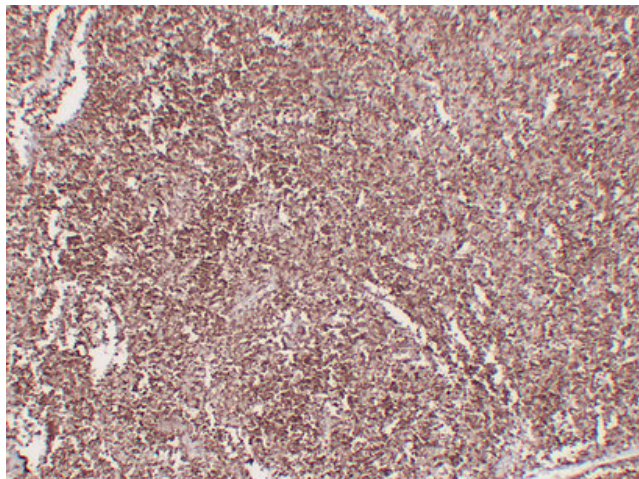
CD1 (CD1A) Mouse Monoclonal Antibody [Clone ID: 9A5-1F8-2B4]

Product data:

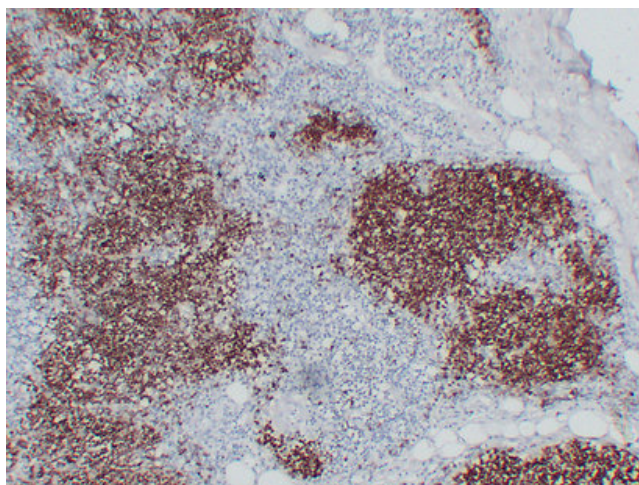
Product Type:	Primary Antibodies
Clone Name:	9A5-1F8-2B4
Applications:	IHC
Recommended Dilution:	IHC-p: 1/100-1/500
Reactivity:	Human
Host:	Mouse
Isotype:	IgG2b, kappa
Clonality:	Monoclonal
Immunogen:	Synthesized peptide derived from human CD1a
Formulation:	Liquid in PBS containing 50% glycerol, 0.5% BSA and 0.02% sodium azide, pH 7.3.
Concentration:	lot specific
Purification:	Affinity Chromatography
Conjugation:	Unconjugated
Storage:	Store at 4°C short term. Aliquot and store at -20°C long term. Avoid freeze/thaw cycles.
Stability:	1 year
Gene Name:	CD1a molecule
Database Link:	Entrez Gene 909 Human P06126
Background:	Swiss-Prot Acc.P06126.
Synonyms:	CD1; FCB6; HTA1; R4; T6



[View online »](#)

Product images:

Immunohistochemical analysis of paraffin-embedded Thymoma. 1, Antibody was diluted at 1:200(4°,overnight). 2, Citrate buffer of pH6.0 was used for antigen retrieval. 3,Secondary antibody was diluted at 1:200(room temperature, 30min).



Immunohistochemical analysis of paraffin-embedded Thymus. 1, Antibody was diluted at 1:200(4°,overnight). 2, Citrate buffer of pH6.0 was used for antigen retrieval. 3,Secondary antibody was diluted at 1:200(room temperature, 30min).