

Product datasheet for **TA383922**

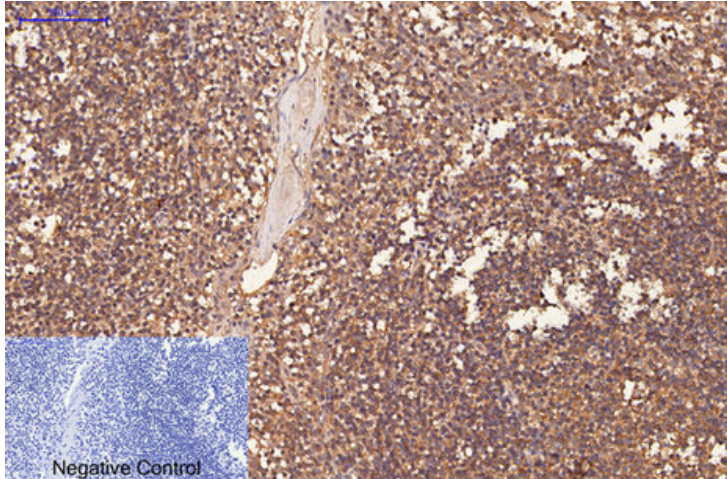
CD1 (CD1A) Mouse Monoclonal Antibody [Clone ID: 4C3-9C8-6A10]

Product data:

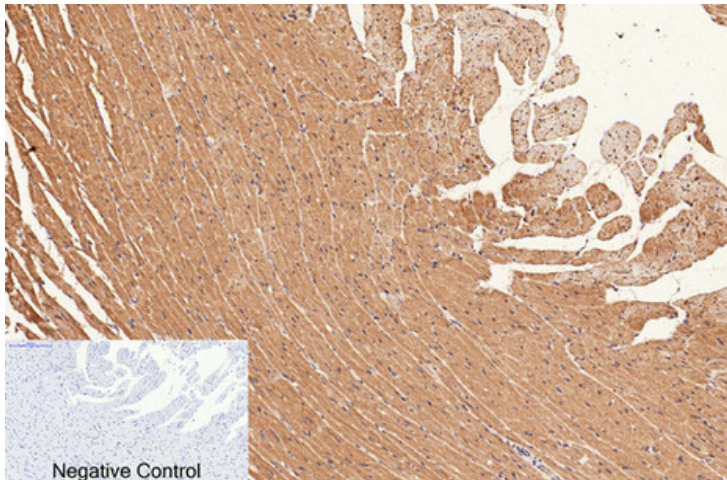
Product Type:	Primary Antibodies
Clone Name:	4C3-9C8-6A10
Applications:	IHC
Recommended Dilution:	IHC: 1/200
Reactivity:	Human, Rat, Mouse
Host:	Mouse
Isotype:	IgG1
Clonality:	Monoclonal
Immunogen:	Synthetic peptide conjugated to KLH.
Formulation:	Liquid in PBS containing 50% glycerol, 0.5% BSA and 0.03% Proclin 300, pH 7.3.
Concentration:	lot specific
Purification:	Affinity Purified
Conjugation:	Unconjugated
Storage:	Store at 4°C short term. Aliquot and store at -20°C long term. Avoid freeze/thaw cycles.
Stability:	1 year
Gene Name:	CD1a molecule
Database Link:	Entrez Gene 909 Human P06126
Background:	Swiss-Prot Acc.P06126.Antigen-presenting protein that binds self and non-self lipid and glycolipid antigens and presents them to T-cell receptors on natural killer T-cells.
Synonyms:	CD1; FCB6; HTA1; R4; T6



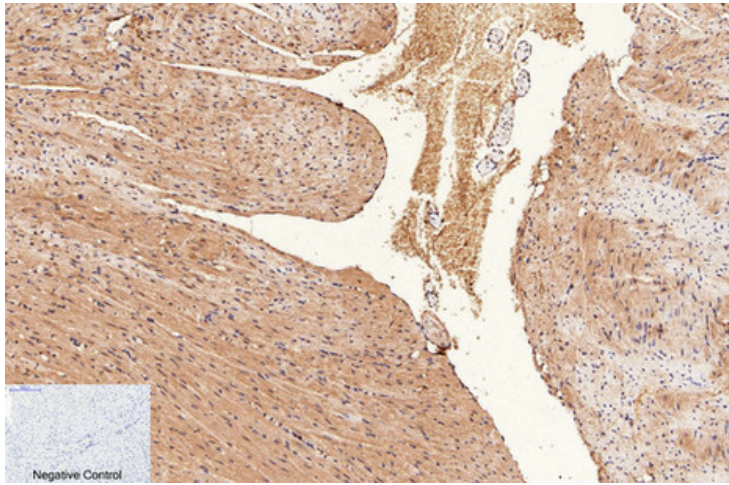
[View online »](#)

Product images:

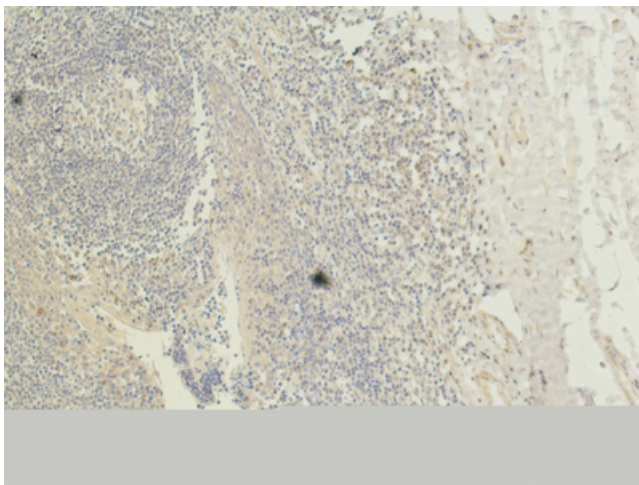
Immunohistochemistry analysis of paraffin-embedded Human Tonsil tissue using CD1a (4C3) antibody. High-pressure and temperature Sodium Citrate pH 6.0 was used for antigen retrieval. Negative control was used by secondary antibody only.



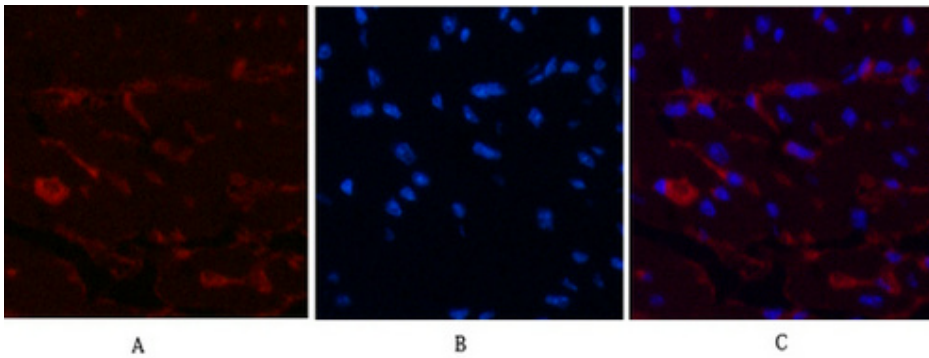
Immunohistochemical analysis of paraffin-embedded Human tonsils using CD1a (4C3) antibody. High-pressure and temperature Sodium Citrate pH 6.0 was used for antigen retrieval. Negative control was used by secondary antibody only.



Immunohistochemistry analysis of paraffin-embedded mouse heart tissue using CD1a antibody. High-pressure and temperature Sodium Citrate pH 6.0 was used for antigen retrieval. Negative control was used by secondary antibody only.



Immunohistochemistry analysis of paraffin-embedded Human tonsils using CD1a (4C3) antibody. High-pressure and temperature Sodium Citrate pH 6.0 was used for antigen retrieval.



Immunofluorescence analysis of CD1a (4C3) in mouse heart tissue using CD1a (4C3) antibody(9H6)(red),and DAPI (blue).