

Product datasheet for **TA383920**

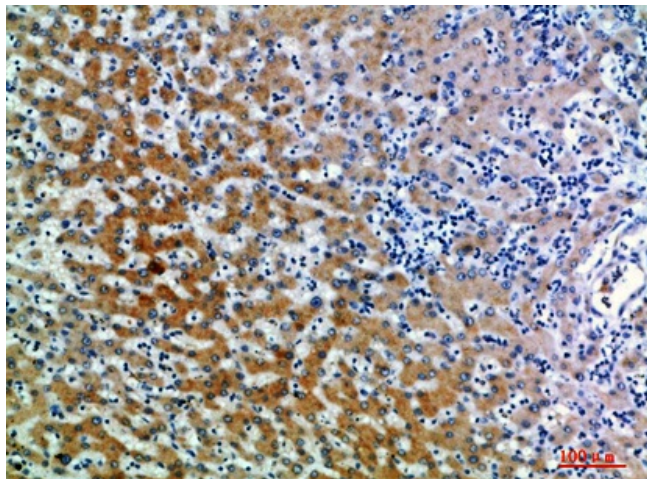
CD109 Rabbit Polyclonal Antibody

Product data:

Product Type:	Primary Antibodies
Applications:	ELISA, IHC
Recommended Dilution:	IHC-p: 1/50-1/200
Reactivity:	Human
Host:	Rabbit
Isotype:	IgG
Clonality:	Polyclonal
Immunogen:	Synthetic peptide from human protein at AA range: 751-800
Formulation:	Liquid in PBS containing 50% glycerol, 0.5% BSA and 0.02% sodium azide, pH 7.3.
Concentration:	lot specific
Purification:	Affinity Purified
Conjugation:	Unconjugated
Storage:	Store at 4°C short term. Aliquot and store at -20°C long term. Avoid freeze/thaw cycles.
Stability:	1 year
Database Link:	Q6YHK3



[View online »](#)

Product images:

Immunohistochemistry analysis of paraffin-embedded Human liver using CD109 antibody. High-pressure and temperature Sodium Citrate pH 6.0 was used for antigen retrieval.