

## Product datasheet for **TA383918M**

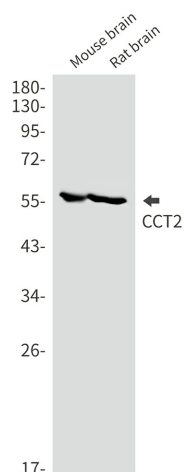
### **TCP1 beta (CCT2) Rabbit Monoclonal Antibody [Clone ID: R07-6C2]**

#### **Product data:**

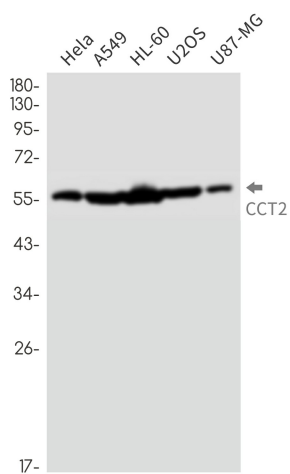
Product Type:	Primary Antibodies
Clone Name:	R07-6C2
Applications:	IF, IHC, IP, WB
Recommended Dilution:	WB: 1/2000-1/10000 IHC: 1/50 ICC/IF: 1/50 IP: 1/20
Reactivity:	Human, Mouse, Rat
Host:	Rabbit
Isotype:	IgG
Clonality:	Monoclonal
Immunogen:	A synthetic peptide of human CCT2
Formulation:	50mM Tris-Glycine(pH 7.4), 0.15M NaCl, 40% Glycerol, 0.01% Sodium azide and 0.05% BSA
Concentration:	lot specific
Purification:	Affinity Purified
Conjugation:	Unconjugated
Storage:	Store at 4°C short term. Aliquot and store at -20°C long term. Avoid freeze/thaw cycles.
Stability:	1 year
Predicted Protein Size:	Calculated MW:57 kDa,Observed MW:57 kDa
Gene Name:	chaperonin containing TCP1 subunit 2
Database Link:	<a href="#">Entrez Gene 10576 Human P78371</a>
Synonyms:	99D8.1; CCT-beta; CCTB; MGC142074; MGC142076; PRO1633; TCP-1-beta


[View online »](#)

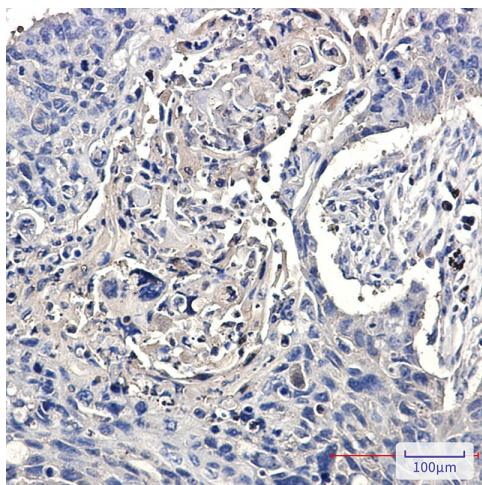
## Product images:



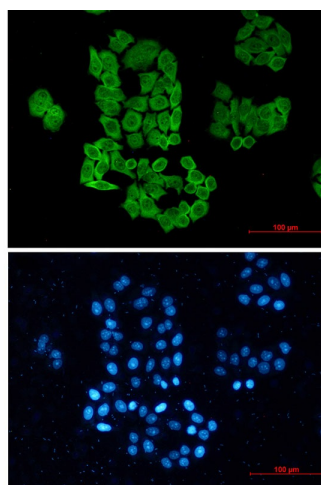
Western blot analysis of CCT2 in mouse brain, rat brain lysates using CCT2 antibody.



Western blot analysis of CCT2 in Hela, A549, HL-60, U2OS, U87-MG lysates using CCT2 antibody.



Immunohistochemistry analysis of paraffin-embedded Human lung cancer using CCT2 antibody. High-pressure and temperature Sodium Citrate pH 6.0 was used for antigen retrieval.



Immunocytochemistry analysis of CCT2 (green) in HeLa using CCT2 antibody, and DAPI (blue).