

Product datasheet for **TA383917**

CCR8 Rabbit Polyclonal Antibody

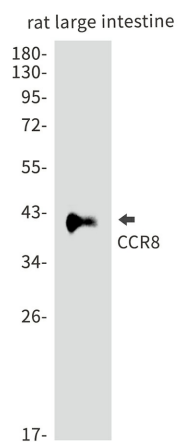
Product data:

Product Type:	Primary Antibodies
Applications:	FC, IF, WB
Recommended Dilution:	WB: 1/1000 ICC/IF: 1/20 FC: 1/200
Reactivity:	Rat
Host:	Rabbit
Isotype:	IgG
Clonality:	Polyclonal
Immunogen:	A synthetic peptide of human CCR8
Formulation:	50mM Tris-Glycine(pH 7.4), 0.15M NaCl, 40% Glycerol, 0.01% Sodium azide and 0.05% BSA
Concentration:	lot specific
Purification:	Affinity Purified
Conjugation:	Unconjugated
Storage:	Store at 4°C short term. Aliquot and store at -20°C long term. Avoid freeze/thaw cycles.
Stability:	1 year
Predicted Protein Size:	Calculated MW: 41 kDa; Observed MW: 41 kDa
Gene Name:	C-C motif chemokine receptor 8
Database Link:	P51685
Background:	Swiss-Prot Acc.P51685.
Synonyms:	CC-CKR-8; CCR-8; CDw198; CKR-L1; CKRL1; CMKBR8; CMKBRL2; CY6; GPR-CY6; GPRCY6; MGC129966; MGC129973; TER1



[View online »](#)

Product images:



Western blot analysis of CCR8 in rat large intestine lysates using CCR8 antibody.