

## Product datasheet for **TA383916S**

### CCR7 Rabbit Monoclonal Antibody [Clone ID: R06-4E1]

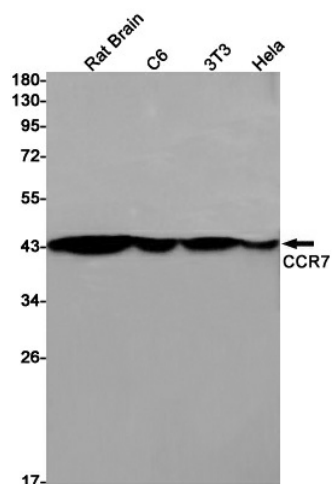
#### Product data:

Product Type:	Primary Antibodies
Clone Name:	R06-4E1
Applications:	IP, WB
Recommended Dilution:	WB: 1/2000 IP: 1/20
Reactivity:	Human, Mouse, Rat
Host:	Rabbit
Isotype:	IgG
Clonality:	Monoclonal
Immunogen:	A synthetic peptide of human CCR7
Formulation:	50mM Tris-Glycine(pH 7.4), 0.15M NaCl, 40% Glycerol, 0.01% Sodium azide and 0.05% BSA
Concentration:	lot specific
Purification:	Affinity Purified
Conjugation:	Unconjugated
Storage:	Store at 4°C short term. Aliquot and store at -20°C long term. Avoid freeze/thaw cycles.
Stability:	1 year
Predicted Protein Size:	Calculated MW: 43 kDa; Observed MW: 43 kDa
Gene Name:	C-C motif chemokine receptor 7
Database Link:	<a href="#">Entrez Gene 1236 Human P32248</a>
Background:	Swiss-Prot Acc.P32248.Receptor for the MIP-3-beta chemokine. Probable mediator of EBV effects on B-lymphocytes or of normal lymphocyte functions.
Synonyms:	BLR2; CC-CKR-7; CCR-7; CD197; CDw197; CMKBR7; EBI1; EVI1



[View online »](#)

## Product images:



Western blot analysis of CCR7 in rat Brain, C6, 3T3, HeLa lysates using CCR7 antibody.