

Product datasheet for **TA383913**

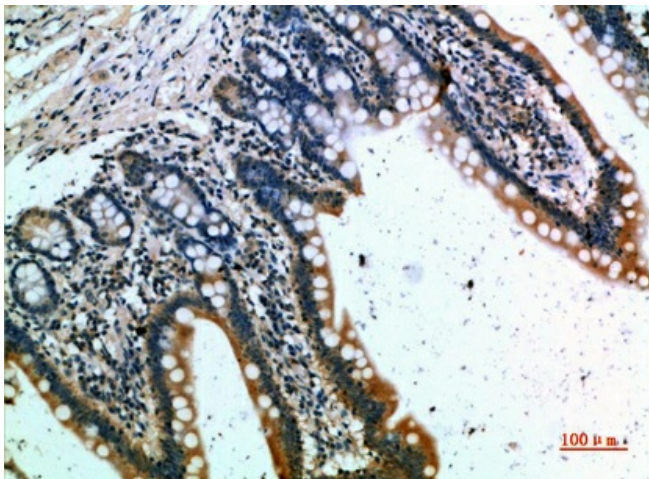
CCR1 Rabbit Polyclonal Antibody

Product data:

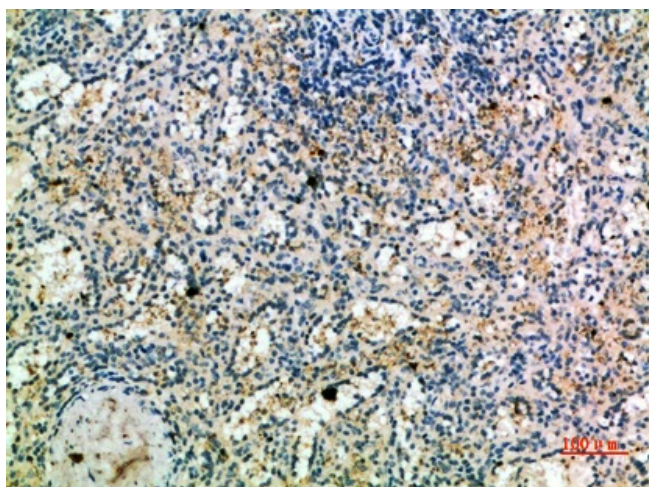
| | |
|-----------------------|--|
| Product Type: | Primary Antibodies |
| Applications: | ELISA, IHC |
| Recommended Dilution: | IHC-p: 1/50-1/200 |
| Reactivity: | Human |
| Host: | Rabbit |
| Isotype: | IgG |
| Clonality: | Polyclonal |
| Immunogen: | Synthetic peptide from human protein at AA range: 151-200 |
| Formulation: | Liquid in PBS containing 50% glycerol, 0.5% BSA and 0.02% sodium azide, pH 7.3. |
| Concentration: | lot specific |
| Purification: | Affinity Purified |
| Conjugation: | Unconjugated |
| Storage: | Store at 4°C short term. Aliquot and store at -20°C long term. Avoid freeze/thaw cycles. |
| Stability: | 1 year |
| Database Link: | P32246 |
| Background: | Swiss-Prot Acc.P32246. |



[View online »](#)

Product images:

Immunohistochemistry analysis of paraffin-embedded Human small intestine using CCR 1 antibody. High-pressure and temperature Sodium Citrate pH 6.0 was used for antigen retrieval.



Immunohistochemical analysis of paraffin-embedded Human tonsils using CCR 1 antibody. High-pressure and temperature Sodium Citrate pH 6.0 was used for antigen retrieval.