

## Product datasheet for **TA383912M**

### Cyclin H (CCNH) Mouse Monoclonal Antibody [Clone ID: 1A7-B5-D4]

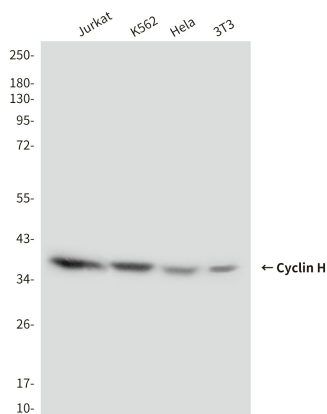
#### Product data:

Product Type:	Primary Antibodies
Clone Name:	1A7-B5-D4
Applications:	WB
Recommended Dilution:	WB: 1/1000
Reactivity:	Human, Mouse
Host:	Mouse
Isotype:	IgG2b
Clonality:	Monoclonal
Immunogen:	Purified recombinant human Cyclin H protein fragments expressed in E.coli.
Formulation:	Liquid in PBS containing 50% glycerol, 0.5% BSA and 0.03% Proclin 300, pH 7.3.
Concentration:	lot specific
Purification:	Affinity Purified
Conjugation:	Unconjugated
Storage:	Store at 4°C short term. Aliquot and store at -20°C long term. Avoid freeze/thaw cycles.
Stability:	1 year
Predicted Protein Size:	38kDa
Gene Name:	cyclin H
Database Link:	<a href="#">Entrez Gene 902 Human P51946</a>
Background:	Swiss-Prot Acc.P51946.Cyclin H belongs to a conserved cyclin family that plays a critical role in the regulation of cell cycle dependent kinases (CDKs) necessary for cell cycle progression. In general, the activity of CDKs requires the binding of appropriate cyclins as well as phosphorylation driven by Cdk-activating kinase (CAK). Involved in cell cycle control and in RNA transcription by RNA polymerase II.
Synonyms:	CAK; p34; p37



[View online »](#)

## Product images:



Western blot analysis of Cyclin H in Jurkat, K562, HeLa and 3T3 lysates using Cyclin H antibody.