

## Product datasheet for **TA383911**

### Cyclin E2 (CCNE2) Rabbit Polyclonal Antibody

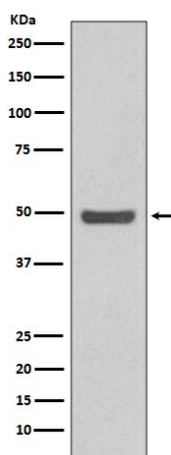
#### Product data:

Product Type:	Primary Antibodies
Applications:	FC, IF, IHC, WB
Recommended Dilution:	WB: 1/500-1/1000 IHC: 1/50-1/200 ICC/IF: 1/100-1/500 FC: 1/20
Reactivity:	Human, Mouse
Host:	Rabbit
Isotype:	IgG
Clonality:	Polyclonal
Immunogen:	A synthesized peptide derived from human Cyclin E2
Formulation:	Rabbit IgG in phosphate buffered saline , pH 7.4, 150mM NaCl, 0.02% sodium azide and 50% glycerol.
Concentration:	lot specific
Purification:	Affinity Chromatography
Conjugation:	Unconjugated
Storage:	Store at 4°C short term. Aliquot and store at -20°C long term. Avoid freeze/thaw cycles.
Stability:	1 year
Predicted Protein Size:	47kDa
Gene Name:	cyclin E2
Database Link:	<a href="#">Entrez Gene 9134 Human O96020</a>
Background:	Swiss-Prot Acc.O96020.Cyclin E1 and cyclin E2 can associate with and activate CDK2. Upon DNA damage, upregulation of the CDK inhibitors p21 Waf1/Cip1 and p27 Kip1 prevent cyclin E/CDK2 activation, resulting in G1/S arrest. Essential for the control of the cell cycle at the late G1 and early S phase.
Synonyms:	CYCE2

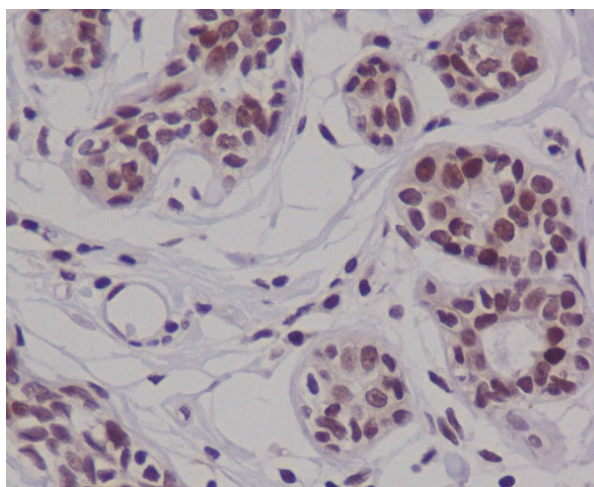


[View online »](#)

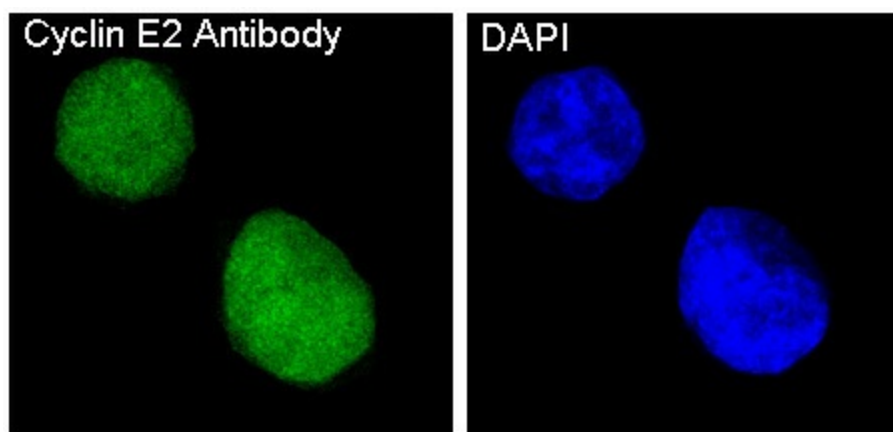
**Product images:**



Western blot analysis of Cyclin E2 in HeLa lysates using Cyclin E2 antibody.



Immunohistochemistry analysis of paraffin-embedded Human breast carcinoma using Cyclin E2 antibody. High-pressure and temperature Sodium Citrate pH 6.0 was used for antigen retrieval.



Immunofluorescence analysis of Cyclin E2 in HeLa using Cyclin E2 antibody.