

Product datasheet for **TA383909M**

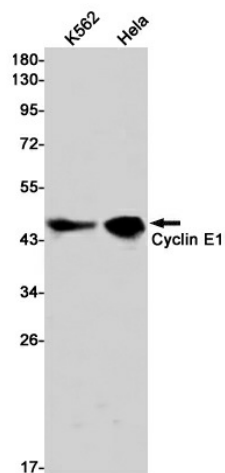
Cyclin E1 (CCNE1) Rabbit Monoclonal Antibody [Clone ID: R08-2A1]

Product data:

Product Type:	Primary Antibodies
Clone Name:	R08-2A1
Applications:	WB
Recommended Dilution:	WB: 1/1000-1/5000
Reactivity:	Human
Host:	Rabbit
Isotype:	IgG
Clonality:	Monoclonal
Immunogen:	A synthetic peptide of human Cyclin E1
Formulation:	50mM Tris-Glycine(pH 7.4), 0.15M NaCl, 40% Glycerol, 0.01% Sodium azide and 0.05% BSA
Concentration:	lot specific
Purification:	Affinity Purified
Conjugation:	Unconjugated
Storage:	Store at 4°C short term. Aliquot and store at -20°C long term. Avoid freeze/thaw cycles.
Stability:	1 year
Predicted Protein Size:	Calculated MW: 47 kDa; Observed MW: 47 kDa
Gene Name:	cyclin E1
Database Link:	Entrez Gene 898 Human P24864
Background:	Swiss-Prot Acc.P24864.Essential for the control of the cell cycle at the G1/S (start) transition.
Synonyms:	CCNE

[View online »](#)

Product images:



Western blot analysis of Cyclin E1 in K562, HeLa lysates using Cyclin E1 antibody.