

## Product datasheet for **TA383908**

### Cyclin E1 (CCNE1) Rabbit Polyclonal Antibody

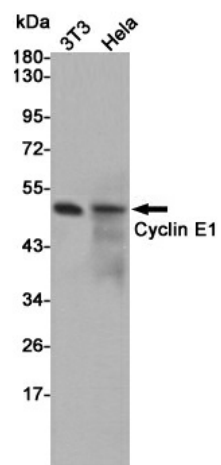
#### Product data:

Product Type:	Primary Antibodies
Applications:	ELISA, IF, IHC, WB
Recommended Dilution:	WB: 1/500-1/2000 IHC: 1/100-1/300 IF: 1/200-1/1000 ELISA: 1/20000
Reactivity:	Human, Mouse, Rat
Host:	Rabbit
Isotype:	IgG
Clonality:	Polyclonal
Immunogen:	The antiserum was produced against synthesized peptide derived from human Cyclin E1. AA range:91-140
Formulation:	Liquid in PBS containing 50% glycerol, 0.5% BSA and 0.02% sodium azide, pH 7.3.
Concentration:	lot specific
Purification:	Affinity Purified
Conjugation:	Unconjugated
Storage:	Store at 4°C short term. Aliquot and store at -20°C long term. Avoid freeze/thaw cycles.
Stability:	1 year
Predicted Protein Size:	Observed MW (kDa):49
Gene Name:	cyclin E1
Database Link:	<a href="#">Entrez Gene 898 Human P24864</a>
Background:	Swiss-Prot Acc.P24864.
Synonyms:	CCNE



[View online »](#)

## Product images:



Western blot analysis of Cyclin E1 in 3T3 and HeLa lysates using Cyclin E1 antibody.