

Product datasheet for **TA383907S**

Cyclin D1 (CCND1) Rabbit Polyclonal Antibody

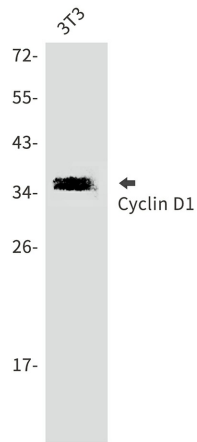
Product data:

Product Type:	Primary Antibodies
Applications:	IHC, IP, WB
Recommended Dilution:	WB: 1/2000 IHC: 1/20-1/500 IP: 1/30
Reactivity:	Human, Mouse, Rat
Host:	Rabbit
Isotype:	IgG
Clonality:	Polyclonal
Immunogen:	A synthetic peptide of human Cyclin D1
Formulation:	50mM Tris-Glycine(pH 7.4), 0.15M NaCl, 40% Glycerol, 0.01% Sodium azide and 0.05% BSA
Concentration:	lot specific
Purification:	Affinity Purified
Conjugation:	Unconjugated
Storage:	Store at 4°C short term. Aliquot and store at -20°C long term. Avoid freeze/thaw cycles.
Stability:	1 year
Predicted Protein Size:	Calculated MW: 34 kDa; Observed MW: 36 kDa
Gene Name:	cyclin D1
Database Link:	Entrez Gene 595 Human P24385
Background:	Swiss-Prot Acc.P24385.
Synonyms:	BCL1; D11S287E; PRAD1; U21B31

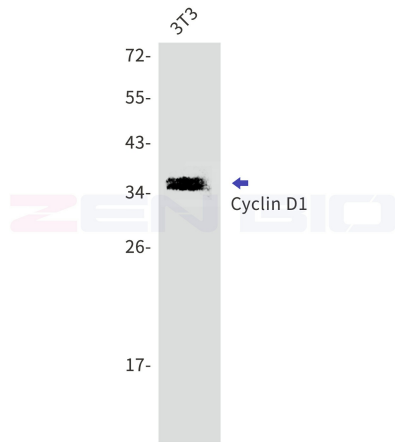


[View online »](#)

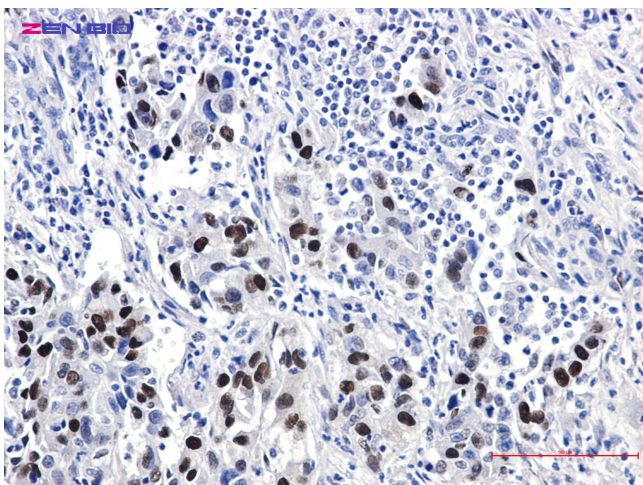
Product images:



Western blot analysis of Cyclin D1 in 3T3 lysates using Cyclin D1 antibody.



Western blot detection of Cyclin D1 in 3T3 lysates using Cyclin D1 antibody. Predicted band size: 34kDa. Observed band size: 36kDa.



Immunohistochemistry of Cyclin D1 in paraffin-embedded Human lung cancer tissue using Cyclin D1 Rabbit pAb at dilution 1/20