

Product datasheet for **TA383907M**

Cyclin D1 (CCND1) Rabbit Polyclonal Antibody

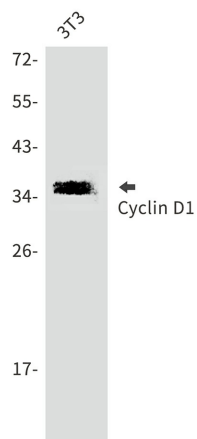
Product data:

| | |
|-------------------------|--|
| Product Type: | Primary Antibodies |
| Applications: | IHC, IP, WB |
| Recommended Dilution: | WB: 1/2000 IHC: 1/20-1/500 IP: 1/30 |
| Reactivity: | Human, Mouse, Rat |
| Host: | Rabbit |
| Isotype: | IgG |
| Clonality: | Polyclonal |
| Immunogen: | A synthetic peptide of human Cyclin D1 |
| Formulation: | 50mM Tris-Glycine(pH 7.4), 0.15M NaCl, 40% Glycerol, 0.01% Sodium azide and 0.05% BSA |
| Concentration: | lot specific |
| Purification: | Affinity Purified |
| Conjugation: | Unconjugated |
| Storage: | Store at 4°C short term. Aliquot and store at -20°C long term. Avoid freeze/thaw cycles. |
| Stability: | 1 year |
| Predicted Protein Size: | Calculated MW: 34 kDa; Observed MW: 36 kDa |
| Gene Name: | cyclin D1 |
| Database Link: | Entrez Gene 595 Human P24385 |
| Background: | Swiss-Prot Acc.P24385. |
| Synonyms: | BCL1; D11S287E; PRAD1; U21B31 |

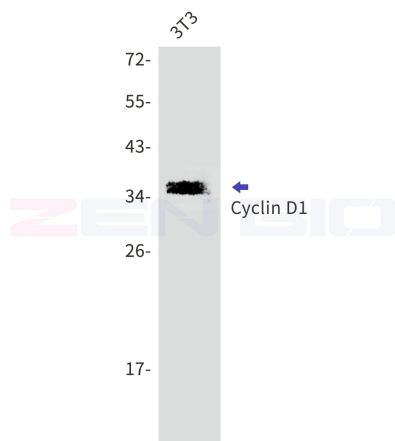


[View online »](#)

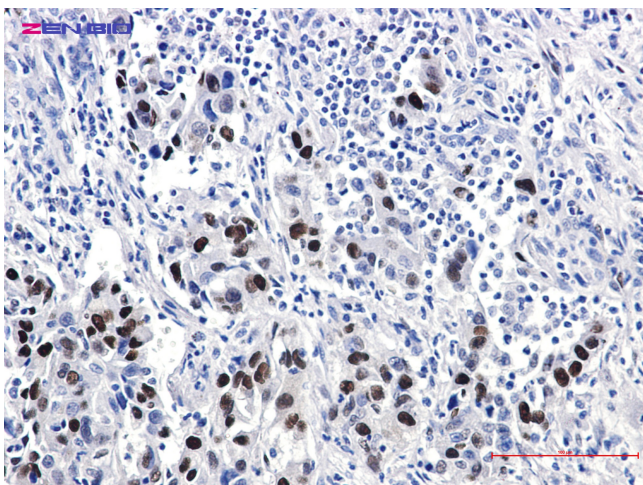
Product images:



Western blot analysis of Cyclin D1 in 3T3 lysates using Cyclin D1 antibody.



Western blot detection of Cyclin D1 in 3T3 lysates using Cyclin D1 antibody. Predicted band size: 34 kDa. Observed band size: 36 kDa.



Immunohistochemistry of Cyclin D1 in paraffin-embedded Human lung cancer tissue using Cyclin D1 Rabbit pAb at dilution 1/20