

## Product datasheet for **TA383906M**

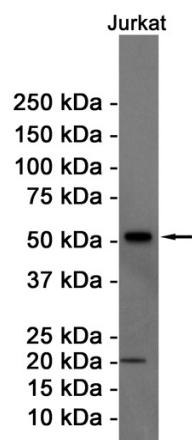
### **Ccnb1 Rabbit Monoclonal Antibody [Clone ID: R08-9B7]**

#### **Product data:**

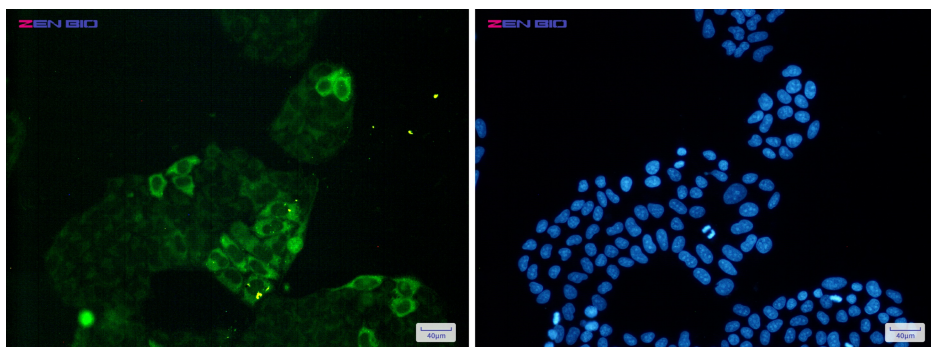
Product Type:	Primary Antibodies
Clone Name:	R08-9B7
Applications:	IF, WB
Recommended Dilution:	WB: 1/1000 ICC/IF: 1/100
Reactivity:	Human
Host:	Rabbit
Isotype:	IgG
Clonality:	Monoclonal
Immunogen:	Recombinant protein of mouse Cyclin B1
Formulation:	50mM Tris-Glycine(pH 7.4), 0.15M NaCl, 40% Glycerol, 0.01% Sodium azide and 0.05% BSA
Concentration:	lot specific
Purification:	Affinity Purified
Conjugation:	Unconjugated
Storage:	Store at 4°C short term. Aliquot and store at -20°C long term. Avoid freeze/thaw cycles.
Stability:	1 year
Predicted Protein Size:	Calculated MW: 48 kDa; Observed MW: 55 kDa
Gene Name:	cyclin B1
Database Link:	<a href="#">P24860</a>
Background:	Swiss-Prot Acc.P24860.Essential for the control of the cell cycle at the G2/M (mitosis) transition.
Synonyms:	CCNB

[View online »](#)

## Product images:



Western blot analysis of Cyclin B1 in Jurkat lysates using Cyclin B1 antibody.



Immunocytochemistry of Cyclin B1 (green) in HeLa cells using Cyclin B1 Rabbit mAb at dilution 1/50, and DAPI (blue)