

## Product datasheet for **TA383905M**

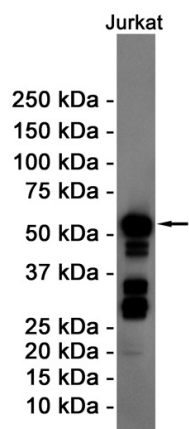
### Cyclin B1 (CCNB1) Rabbit Monoclonal Antibody [Clone ID: R01-7H7]

#### Product data:

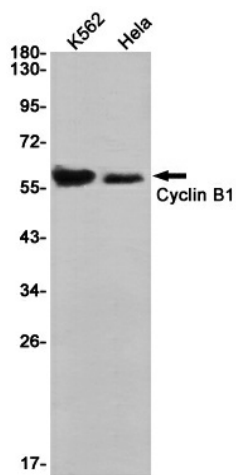
Product Type:	Primary Antibodies
Clone Name:	R01-7H7
Applications:	IF, IP, WB
Recommended Dilution:	WB: 1/2000 ICC/IF: 1/20 IP: 1/20
Reactivity:	Human
Host:	Rabbit
Isotype:	IgG
Clonality:	Monoclonal
Immunogen:	A synthetic peptide of human Cyclin B1
Formulation:	50mM Tris-Glycine(pH 7.4), 0.15M NaCl, 40% Glycerol, 0.01% Sodium azide and 0.05% BSA
Concentration:	lot specific
Purification:	Affinity Purified
Conjugation:	Unconjugated
Storage:	Store at 4°C short term. Aliquot and store at -20°C long term. Avoid freeze/thaw cycles.
Stability:	1 year
Predicted Protein Size:	Calculated MW: 48 kDa; Observed MW: 55 kDa
Gene Name:	cyclin B1
Database Link:	<a href="#">Entrez Gene 891 Human P14635</a>
Background:	Swiss-Prot Acc.P14635.Essential for the control of the cell cycle at the G2/M (mitosis) transition.
Synonyms:	CCNB


[View online »](#)

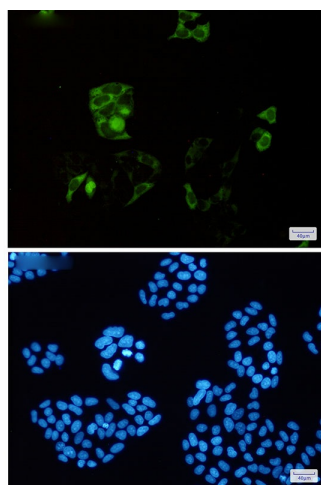
## Product images:



Western blot analysis of Cyclin B1 in Jurkat lysates using Cyclin B1 antibody.



Western blot analysis of Cyclin B1 in K562, HeLa lysates using Cyclin B1 antibody.



Immunocytochemistry analysis of Cyclin B1(green) in HeLa using Cyclin B1 antibody, and DAPI(blue)