

## Product datasheet for **TA383904S**

### Cyclin B1 (CCNB1) Rabbit Polyclonal Antibody

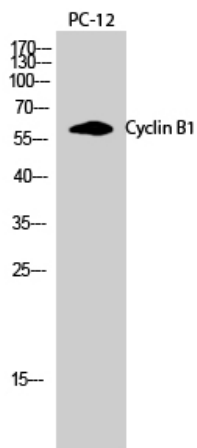
#### Product data:

Product Type:	Primary Antibodies
Applications:	ELISA, IF, IHC, WB
Recommended Dilution:	WB: 1/500-1/2000 IHC: 1/100-1/300 IF: 1/200-1/1000 ELISA: 1/20000
Reactivity:	Human, Mouse, Rat
Host:	Rabbit
Isotype:	IgG
Clonality:	Polyclonal
Immunogen:	The antiserum was produced against synthesized peptide derived from human Cyclin B1. AA range:91-140
Formulation:	Liquid in PBS containing 50% glycerol, 0.5% BSA and 0.02% sodium azide, pH 7.3.
Concentration:	lot specific
Purification:	Affinity Purified
Conjugation:	Unconjugated
Storage:	Store at 4°C short term. Aliquot and store at -20°C long term. Avoid freeze/thaw cycles.
Stability:	1 year
Predicted Protein Size:	Observed MW (kDa):60
Gene Name:	cyclin B1
Database Link:	<a href="#">Entrez Gene 891 Human P14635</a>
Background:	Swiss-Prot Acc.P14635.
Synonyms:	CCNB

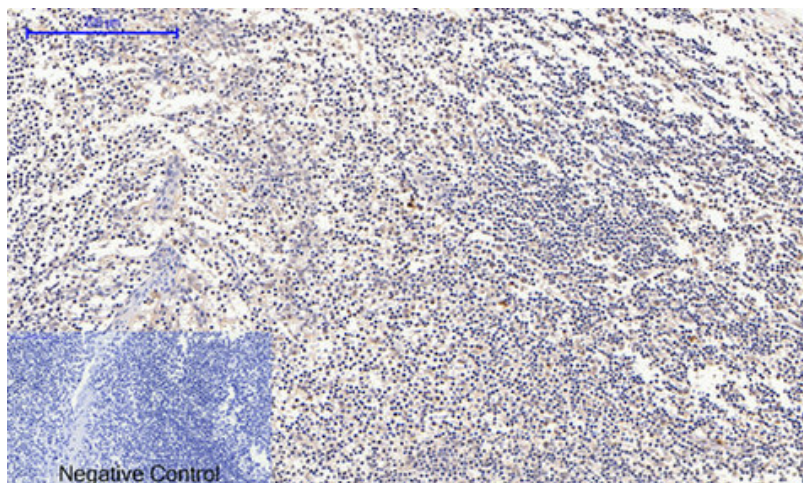


[View online »](#)

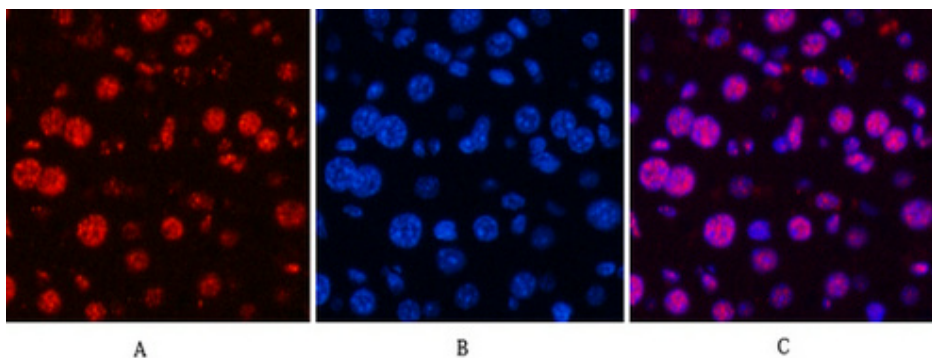
**Product images:**



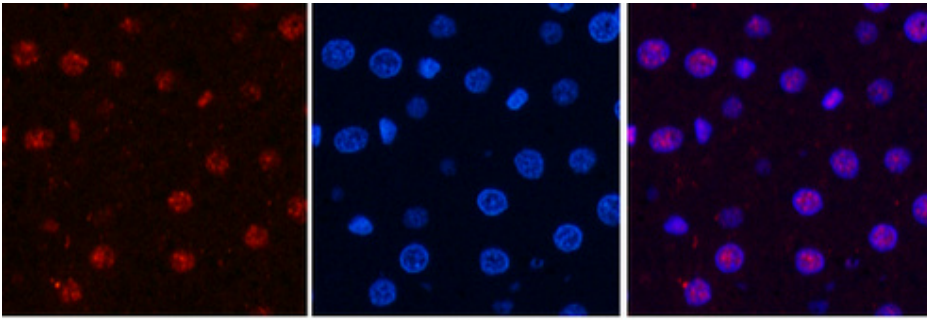
Western blot analysis of Cyclin B1 in PC-12 lysates using Cyclin B1 antibody.



Immunohistochemistry analysis of paraffin-embedded Human tonsil using Cyclin B1 antibody. High-pressure and temperature Sodium Citrate pH 6.0 was used for antigen retrieval. Negative control was used by secondary antibody only.



Immunofluorescence analysis of Cyclin B1 in mouse liver using Cyclin B1 antibody (red), and DAPI (blue).



A

B

C

Immunofluorescence analysis of Cyclin B1 in rat liver using Cyclin B1 antibody(red).