

Product datasheet for **TA383903**

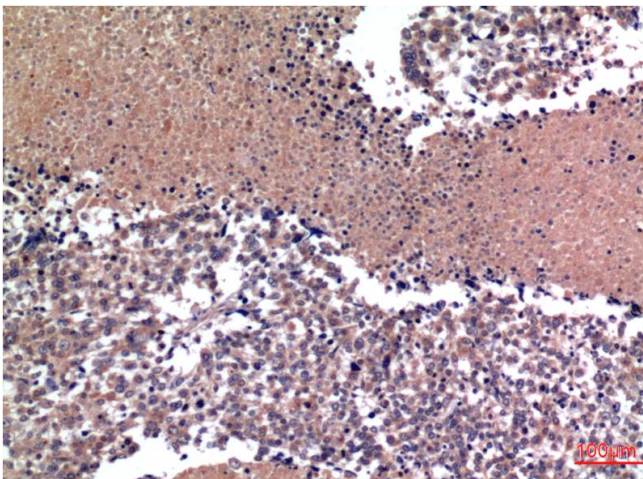
Cyclin B1 (CCNB1) Mouse Monoclonal Antibody [Clone ID: 1B3-3B1-1B4]

Product data:

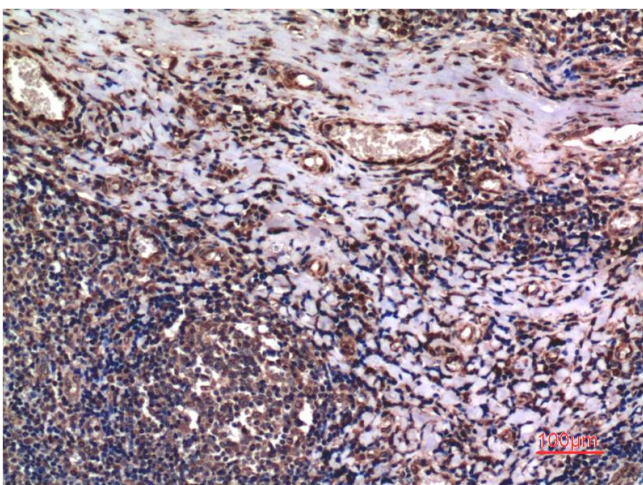
Product Type:	Primary Antibodies
Clone Name:	1B3-3B1-1B4
Applications:	IHC
Recommended Dilution:	IHC: 1/200-500
Reactivity:	Human, Rat, Mouse
Host:	Mouse
Isotype:	IgG
Clonality:	Monoclonal
Immunogen:	Synthetic peptide conjugated to KLH.
Formulation:	Liquid in PBS containing 50% glycerol, 0.5% BSA and 0.03% Proclin 300, pH 7.3.
Concentration:	lot specific
Purification:	Affinity Purified
Conjugation:	Unconjugated
Storage:	Store at 4°C short term. Aliquot and store at -20°C long term. Avoid freeze/thaw cycles.
Stability:	1 year
Predicted Protein Size:	55kDa
Gene Name:	cyclin B1
Database Link:	Entrez Gene 891 Human P14635
Background:	Swiss-Prot Acc.P14635.Essential for the control of the cell cycle at the G2/M (mitosis) transition.
Synonyms:	CCNB



[View online »](#)

Product images:

Immunohistochemistry analysis of paraffin-embedded Human Lung Carcinoma Tissue using Cyclin B1 (1B3) antibody. High-pressure and temperature Sodium Citrate pH 6.0 was used for antigen retrieval.



Immunohistochemical analysis of paraffin-embedded Human tonsils using Cyclin B1 (1B3) antibody. High-pressure and temperature Sodium Citrate pH 6.0 was used for antigen retrieval.