

Product datasheet for **TA383902**

Cyclin A2 (CCNA2) Rabbit Polyclonal Antibody

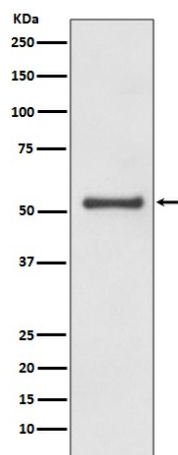
Product data:

Product Type:	Primary Antibodies
Applications:	IHC, IP, WB
Recommended Dilution:	WB: 1/500-1/1000 IHC: 1/100-1/500 IP: 1/50
Reactivity:	Human
Host:	Rabbit
Isotype:	IgG
Clonality:	Polyclonal
Immunogen:	A synthesized peptide derived from human Cyclin A1/A2
Formulation:	Rabbit IgG in phosphate buffered saline , pH 7.4, 150mM NaCl, 0.02% sodium azide and 50% glycerol.
Concentration:	lot specific
Purification:	Affinity Chromatography
Conjugation:	Unconjugated
Storage:	Store at 4°C short term. Aliquot and store at -20°C long term. Avoid freeze/thaw cycles.
Stability:	1 year
Predicted Protein Size:	52,49kDa
Gene Name:	cyclin A2
Database Link:	Entrez Gene 890 Human P20248
Background:	Swiss-Prot Acc.P20248,P78396.May primarily function in the control of the germline meiotic cell cycle and additionally in the control of mitotic cell cycle in some somatic cells. Essential for the control of the cell cycle at the G1/S (start) and the G2/M (mitosis) transitions.
Synonyms:	CCN1; CCNA; Cyclin-A

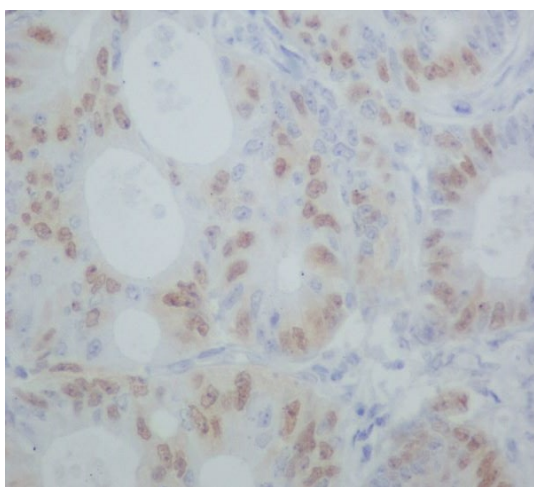


[View online »](#)

Product images:



Western blot analysis of Cyclin A1/A2 in HeLa lysates using Cyclin A1/A2 antibody.



Immunohistochemistry analysis of paraffin-embedded Human colon cancer using Cyclin A1/A2 antibody. High-pressure and temperature Sodium Citrate pH 6.0 was used for antigen retrieval.