

## Product datasheet for **TA383901S**

### Cyclin A1 (CCNA1) Rabbit Polyclonal Antibody

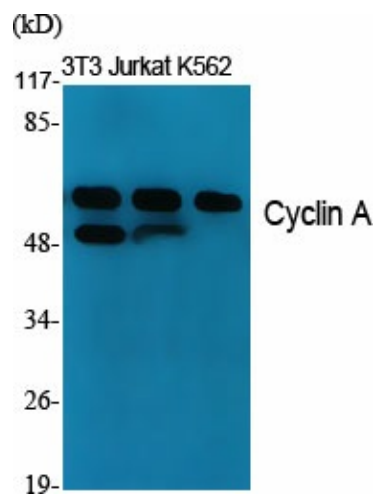
#### Product data:

Product Type:	Primary Antibodies
Applications:	ELISA, IF, IHC, WB
Recommended Dilution:	WB: 1/500-1/2000 IHC: 1/100-1/300 IF: 1/200-1/1000 ELISA: 1/10000
Reactivity:	Human, Mouse, Rat, Monkey
Host:	Rabbit
Isotype:	IgG
Clonality:	Polyclonal
Immunogen:	The antiserum was produced against synthesized peptide derived from human Cyclin A. AA range:221-270
Formulation:	Liquid in PBS containing 50% glycerol, 0.5% BSA and 0.02% sodium azide, pH 7.3.
Concentration:	lot specific
Purification:	Affinity Purified
Conjugation:	Unconjugated
Storage:	Store at 4°C short term. Aliquot and store at -20°C long term. Avoid freeze/thaw cycles.
Stability:	1 year
Predicted Protein Size:	Observed MW (kDa):53
Gene Name:	cyclin A1
Database Link:	<a href="#">Entrez Gene 8900 Human P78396</a>
Background:	Swiss-Prot Acc.P78396.
Synonyms:	CCNA1



[View online »](#)

## Product images:



Western blot analysis of Cyclin A1 in various lysates using Cyclin A1 antibody.