

Product datasheet for **TA383898**

Girdin (CCDC88A) Rabbit Polyclonal Antibody

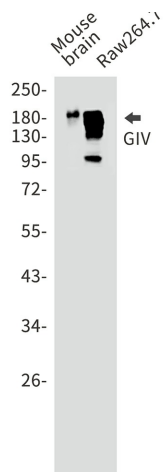
Product data:

Product Type:	Primary Antibodies
Applications:	FC, IF, IP, WB
Recommended Dilution:	WB: 1/1000 ICC/IF: 1/200 FC: 1/20 IP: 1/20
Reactivity:	Human, Mouse, Rat
Host:	Rabbit
Isotype:	IgG
Clonality:	Polyclonal
Immunogen:	Recombinant protein of human Girdin
Formulation:	50mM Tris-Glycine(pH 7.4), 0.15M NaCl, 40% Glycerol, 0.01% Sodium azide and 0.05% BSA
Concentration:	lot specific
Purification:	Affinity Purified
Conjugation:	Unconjugated
Storage:	Store at 4°C short term. Aliquot and store at -20°C long term. Avoid freeze/thaw cycles.
Stability:	1 year
Predicted Protein Size:	Calculated MW: 216 kDa; Observed MW: 216 kDa
Gene Name:	coiled-coil domain containing 88A
Database Link:	Entrez Gene 55704 Human Q3V6T2
Synonyms:	APE; DKFZp686D0630; FLJ10392; GIRDIN; GIV; GRDN; HkRP1; KIAA1212

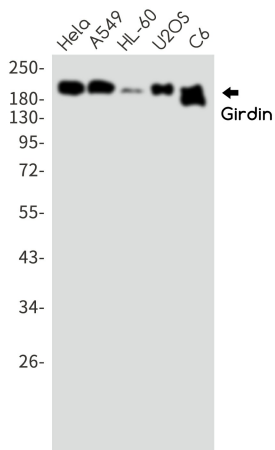


[View online »](#)

Product images:



Western blot analysis of GIV in mouse brain, Raw264.7 lysates using GIV antibody.



Western blot analysis of Girdin in HeLa, A549, HL-60, U2OS, C6 lysates using Girdin antibody.