

## Product datasheet for **TA383895S**

### HP1 alpha (CBX5) Mouse Monoclonal Antibody [Clone ID: 1E8-5C3-10E1]

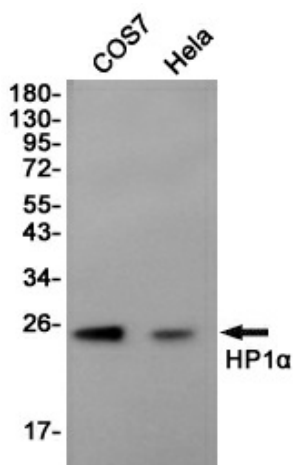
#### Product data:

Product Type:	Primary Antibodies
Clone Name:	1E8-5C3-10E1
Applications:	IHC, WB
Recommended Dilution:	WB: 1/500-1000 IHC: 1/100-200
Reactivity:	Human, Rat, Mouse
Host:	Mouse
Isotype:	IgG1
Clonality:	Monoclonal
Immunogen:	Purified recombinant protein expressed in E.coli.
Formulation:	Liquid in PBS containing 50% glycerol, 0.5% BSA and 0.03% Proclin 300, pH 7.3.
Concentration:	lot specific
Purification:	Affinity Purified
Conjugation:	Unconjugated
Storage:	Store at 4°C short term. Aliquot and store at -20°C long term. Avoid freeze/thaw cycles.
Stability:	1 year
Predicted Protein Size:	22kDa
Gene Name:	chromobox 5
Database Link:	<a href="#">Entrez Gene 23468 Human P45973</a>
Background:	Swiss-Prot Acc.P45973.Component of heterochromatin that recognizes and binds histone H3 tails methylated at 'Lys-9' (H3K9me), leading to epigenetic repression. In contrast, it is excluded from chromatin when 'Tyr-41' of histone H3 is phosphorylated (H3Y41ph). Can interact with lamin-B receptor (LBR). This interaction can contribute to the association of the heterochromatin with the inner nuclear membrane. Involved in the formation of functional kinetochore through interaction with MIS12 complex proteins.
Synonyms:	HP1; HP1-ALPHA; HP1A; HP1Hs-alpha

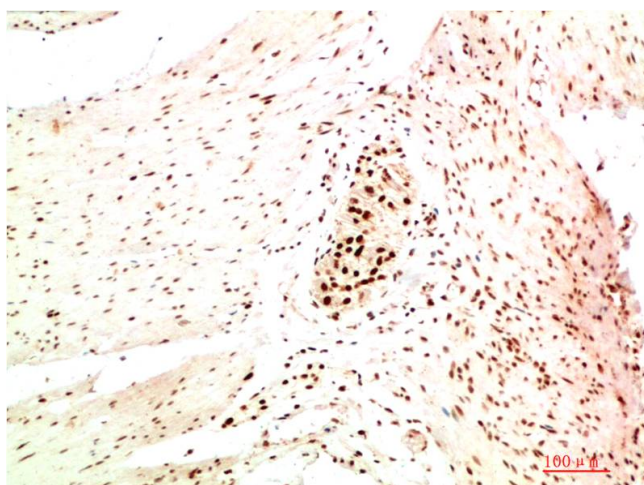


[View online »](#)

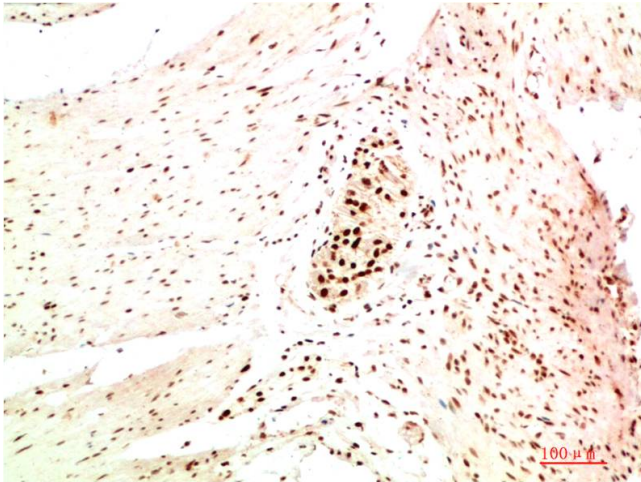
## Product images:



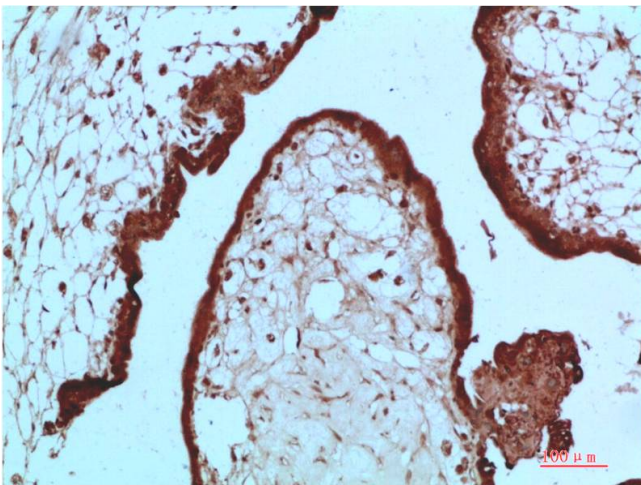
Western blot detection of HP1 $\alpha$  in COS7, HeLa cell lysates using HP1 $\alpha$  (1E8) Mouse mAb (1:1000 diluted). Predicted band size: 22 kDa. Observed band size: 22 kDa.



Immunohistochemistry analysis of paraffin-embedded Human Colon Carcinoma Tissue using HP1 alpha (1E8) antibody. High-pressure and temperature Sodium Citrate pH 6.0 was used for antigen retrieval.



Immunohistochemical analysis of paraffin-embedded Human Colon Carcinoma Tissue using HP-1 $\alpha$  Mouse mAb diluted at 1:200.



Immunohistochemical analysis of paraffin-embedded Human Placenta Tissue using HP-1 alpha; Mouse mAb diluted at 1:200