

## Product datasheet for **TA383894S**

### HP1 gamma (CBX3) Rabbit Monoclonal Antibody [Clone ID: R02-8A2]

#### Product data:

Product Type:	Primary Antibodies
Clone Name:	R02-8A2
Applications:	IHC, IP, WB
Recommended Dilution:	WB: 1/1000 IHC: 1/20-1/500 IP: 1/20
Reactivity:	Human, Mouse, Rat
Host:	Rabbit
Isotype:	IgG
Clonality:	Monoclonal
Immunogen:	A synthetic peptide of mouse HP1 gamma
Formulation:	50mM Tris-Glycine(pH 7.4), 0.15M NaCl, 40% Glycerol, 0.01% Sodium azide and 0.05% BSA
Concentration:	lot specific
Purification:	Affinity Purified
Conjugation:	Unconjugated
Storage:	Store at 4°C short term. Aliquot and store at -20°C long term. Avoid freeze/thaw cycles.
Stability:	1 year
Predicted Protein Size:	Calculated MW: 21 kDa; Observed MW: 21 kDa
Gene Name:	chromobox 3
Database Link:	<a href="#">Entrez Gene 11335 Human P23198</a>



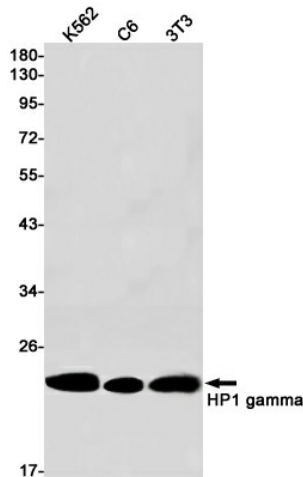
[View online »](#)

**Background:**

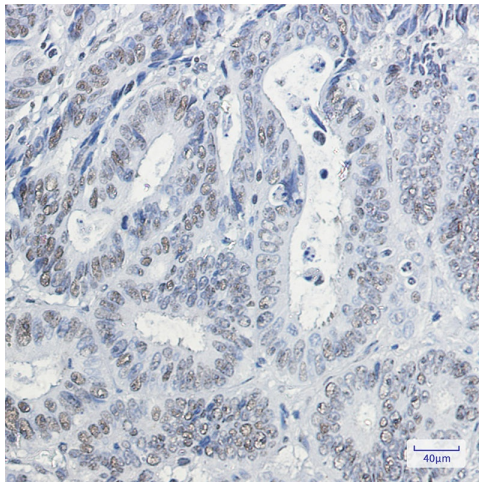
Swiss-Prot Acc.P23198.Component of heterochromatin. Recognizes and binds histone H3 tails methylated at 'Lys-9', leading to epigenetic repression. Probably involved in the repression of many genes located in euchromatin, such as E2F1, MYC and CDC25A. Involved in the formation of functional kinetochore through interaction with MIS12 complex proteins. Contributes to the conversion of local chromatin to a heterochromatin-like repressive state through H3 'Lys-9' trimethylation, mediates the recruitment of the methyltransferases SUV39H1 and/or SUV39H2 by the PER complex to the E-box elements of the circadian target genes such as PER2 itself or PER1 (PubMed:24413057). Mediates the recruitment of NIPBL to sites of DNA damage at double-strand breaks (DSBs) .

**Synonyms:**

HECH; HP1-GAMMA; HP1Hs-gamma

**Product images:**


Western blot analysis of HP1 gamma in K562, C6, 3T3 lysates using HP1 gamma antibody.



Immunohistochemistry analysis of paraffin-embedded Human colon cancer using HP1 gamma antibody.High-pressure and temperature Sodium Citrate pH 6.0 was used for antigen retrieval.