

## Product datasheet for **TA383893**

### HP1 gamma (CBX3) Rabbit Polyclonal Antibody

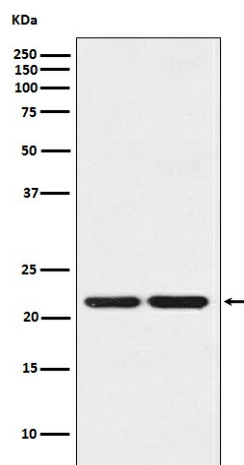
#### Product data:

Product Type:	Primary Antibodies
Applications:	FC, IHC, IP, WB
Recommended Dilution:	WB: 1/500-1/2000 IHC: 1/50-1/200 IP: 1/50 FC: 1/100
Reactivity:	Human, Mouse, Rat
Host:	Rabbit
Isotype:	IgG
Clonality:	Polyclonal
Immunogen:	A synthesized peptide derived from human HP1 gamma
Formulation:	Rabbit IgG in phosphate buffered saline , pH 7.4, 150mM NaCl, 0.02% sodium azide and 50% glycerol.
Concentration:	lot specific
Purification:	Affinity Chromatography
Conjugation:	Unconjugated
Storage:	Store at 4°C short term. Aliquot and store at -20°C long term. Avoid freeze/thaw cycles.
Stability:	1 year
Predicted Protein Size:	24kDa
Gene Name:	chromobox 3
Database Link:	<a href="#">Entrez Gene 11335 Human Q13185</a>
Background:	Swiss-Prot Acc.Q13185.Recognizes and binds histone H3 tails methylated at 'Lys-9', leading to epigenetic repression. May contribute to the association of the heterochromatin with the inner nuclear membrane through its interaction with lamin B receptor (LBR). Involved in the formation of functional kinetochore through interaction with MIS12 complex proteins.
Synonyms:	HECH; HP1-GAMMA; HP1Hs-gamma



[View online »](#)

## Product images:



Western blot analysis of HP1 gamma in (1) HeLa lysates; (2) NIH/3T3 lysates using HP1 gamma antibody.