

Product datasheet for **TA383891M**

HP1 gamma (CBX3) Mouse Monoclonal Antibody [Clone ID: 6F7-6A3-2B10]

Product data:

Product Type:	Primary Antibodies
Clone Name:	6F7-6A3-2B10
Applications:	IHC, WB
Recommended Dilution:	WB: 1/1000-2000 IHC: 1/100-200
Reactivity:	Human, Rat, Mouse
Host:	Mouse
Isotype:	IgG1
Clonality:	Monoclonal
Immunogen:	Purified recombinant protein expressed in E.coli.
Formulation:	Liquid in PBS containing 50% glycerol, 0.5% BSA and 0.03% Proclin 300, pH 7.3.
Concentration:	lot specific
Purification:	Affinity Purified
Conjugation:	Unconjugated
Storage:	Store at 4°C short term. Aliquot and store at -20°C long term. Avoid freeze/thaw cycles.
Stability:	1 year
Predicted Protein Size:	24kDa
Gene Name:	chromobox 3
Database Link:	Entrez Gene 11335 Human Q13185

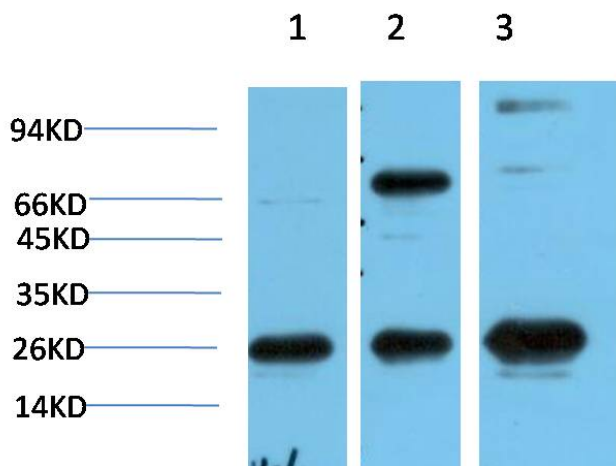
[View online »](#)

Background:

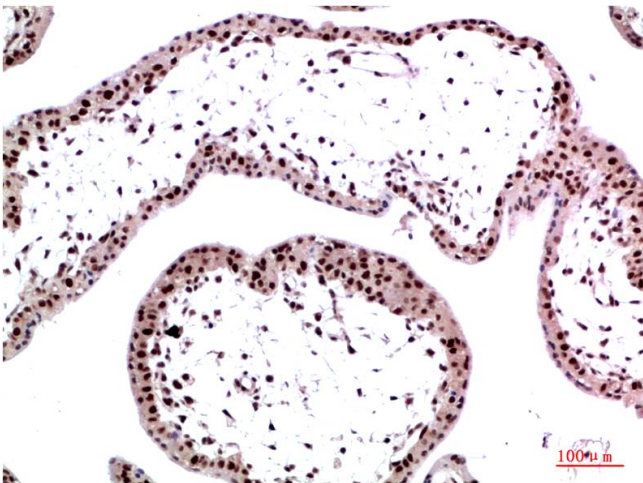
Swiss-Prot Acc.Q13185. Seems to be involved in transcriptional silencing in heterochromatin-like complexes. Recognizes and binds histone H3 tails methylated at 'Lys-9', leading to epigenetic repression. May contribute to the association of the heterochromatin with the inner nuclear membrane through its interaction with lamin B receptor (LBR). Involved in the formation of functional kinetochore through interaction with MIS12 complex proteins. Contributes to the conversion of local chromatin to a heterochromatin-like repressive state through H3 'Lys-9' trimethylation, mediates the recruitment of the methyltransferases SUV39H1 and/or SUV39H2 by the PER complex to the E-box elements of the circadian target genes such as PER2 itself or PER1. Mediates the recruitment of NIPBL to sites of DNA damage at double-strand breaks (DSBs) (PubMed:28167679).

Synonyms:

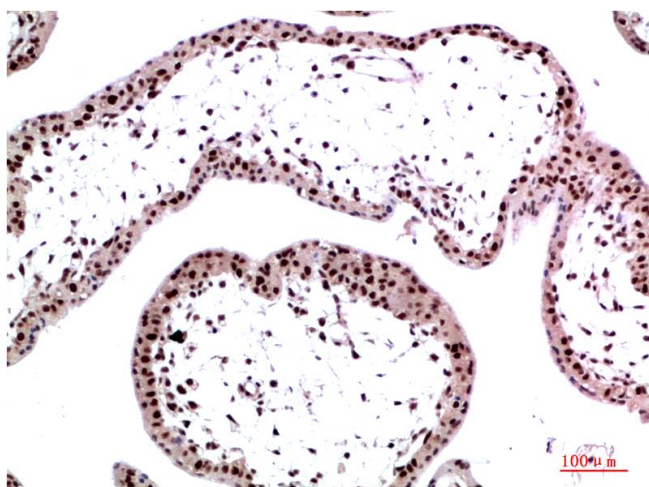
HECH; HP1-GAMMA; HP1Hs-gamma

Product images:


Western blot analysis of 1) Hela Cell Lysate, 2) 3T3 Cell Lysate, 3) PC12 Cell Lysate using HP-1γ Mouse mAb diluted at 1:1000.



Immunohistochemical analysis of paraffin-embedded Human tonsils using HP1 gamma (6D7) antibody. High-pressure and temperature Sodium Citrate pH 6.0 was used for antigen retrieval.



Immunohistochemical analysis of paraffin-embedded Human Placenta Tissue using HP-1γ Mouse mAb diluted at 1:200.