

Product datasheet for **TA383889**

CBL Rabbit Monoclonal Antibody [Clone ID: R01-9G1]

Product data:

Product Type:	Primary Antibodies
Clone Name:	R01-9G1
Applications:	IF, IP, WB
Recommended Dilution:	WB: 1/2000 ICC/IF: 1/20 IP: 1/20
Reactivity:	Human
Host:	Rabbit
Isotype:	IgG
Clonality:	Monoclonal
Immunogen:	A synthetic peptide of human CBL
Formulation:	50mM Tris-Glycine(pH 7.4), 0.15M NaCl, 40% Glycerol, 0.01% Sodium azide and 0.05% BSA
Concentration:	lot specific
Purification:	Affinity Purified
Conjugation:	Unconjugated
Storage:	Store at 4°C short term. Aliquot and store at -20°C long term. Avoid freeze/thaw cycles.
Stability:	1 year
Predicted Protein Size:	Calculated MW: 100 kDa; Observed MW: 120 kDa
Gene Name:	Cbl proto-oncogene
Database Link:	Entrez Gene 867 Human P22681



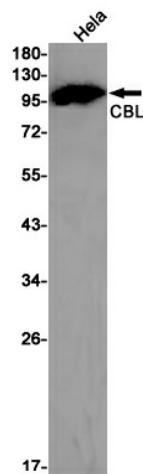
[View online »](#)

Background:

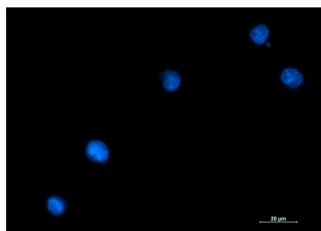
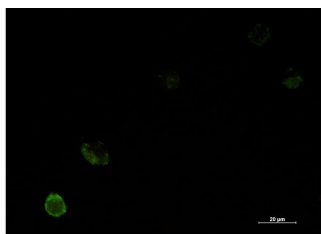
Swiss-Prot Acc.P22681.Adapter protein that functions as a negative regulator of many signaling pathways that are triggered by activation of cell surface receptors. Acts as an E3 ubiquitin-protein ligase, which accepts ubiquitin from specific E2 ubiquitin-conjugating enzymes, and then transfers it to substrates promoting their degradation by the proteasome. Recognizes activated receptor tyrosine kinases, including KIT, FLT1, FGFR1, FGFR2, PDGFRA, PDGFRB, EGFR, CSF1R, EPHA8 and KDR and terminates signaling. Recognizes membrane-bound HCK, SRC and other kinases of the SRC family and mediates their ubiquitination and degradation. Participates in signal transduction in hematopoietic cells. Plays an important role in the regulation of osteoblast differentiation and apoptosis. Essential for osteoclastic bone resorption. The 'Tyr-731' phosphorylated form induces the activation and recruitment of phosphatidylinositol 3-kinase to the cell membrane in a signaling pathway that is critical for osteoclast function. May be functionally coupled with the E2 ubiquitin-protein ligase UB2D3. In association with CBLB, required for proper feedback inhibition of ciliary platelet-derived growth factor receptor-alpha (PDGFRA) signaling pathway via ubiquitination and internalization of PDGFRA .

Synonyms:

C-CBL; CBL2; RNF55

Product images:

Western blot detection of CBL in HeLa cell lysates using CBL Rabbit mAb(1:1000 diluted).Predicted band size:100kDa.Observed band size:120kDa.



Immunocytochemistry analysis of CBL (green) in K562 using CBL antibody, and DAPI (blue).